



Product Catalog Europe 2020

This is a European catalog and the products represented may not be available in all regions or countries. Please contact a local sales representative or customer service for pricing and availability. For the most up-to-date product information, visit [CheckpointSystems.com](https://www.checkpointsystems.com)

Checkpoint 

WHAT'S NEW

Check out our newest innovations!

Universal AUTOPEG™ Single Hole	Page 28
Slice Tag	Page 29
2&3 Alarm StrapLok	Page 32
Optical Tag	Page 34
OptiLok Tag	Page 35
Mini NeedleLok	Page 42
2 Alarm Infant Formula M-Use Keepers	Page 69
Super XT Key Black Detacher	Page 81
R-Turn Tag w/Warning Label	Page 84
Gen7 Dual Technology HT	Page 103
Gen7 Mini RFID HT	Page 104

ABOUT CHECKPOINT

Checkpoint provides you with the most innovative and technically advanced products engineered to protect your high-theft merchandise. Any theft is unacceptable. It is our goal to help you control all levels of theft and improve your bottom line one innovation at a time.

Every Checkpoint product provides:

- **Security** to ensure the highest level of protection for your high-theft merchandise.
- **Aesthetics** to enhance the merchandising of the retail products they protect.
- **Value** to increase your profits by reducing theft and helping to defend your bottom line.
- **Ease-of-use** allows for easy application and removal with less disruption to your sales process.

CONTACT US

Please, note that this catalogue includes our portfolio of main products.
For additional information of any products not included in here, please contact your local sales representative.

Europe

Checkpoint Systems España
Orió nº 1 - 08228 Terrassa
Barcelona, Spain
34.93.736.54.73



BOTTLE CAPS

CABLELOKS

HARD TAGS

KEEPERS

KEYS

SINGLE USE

SPIDER WRAPS

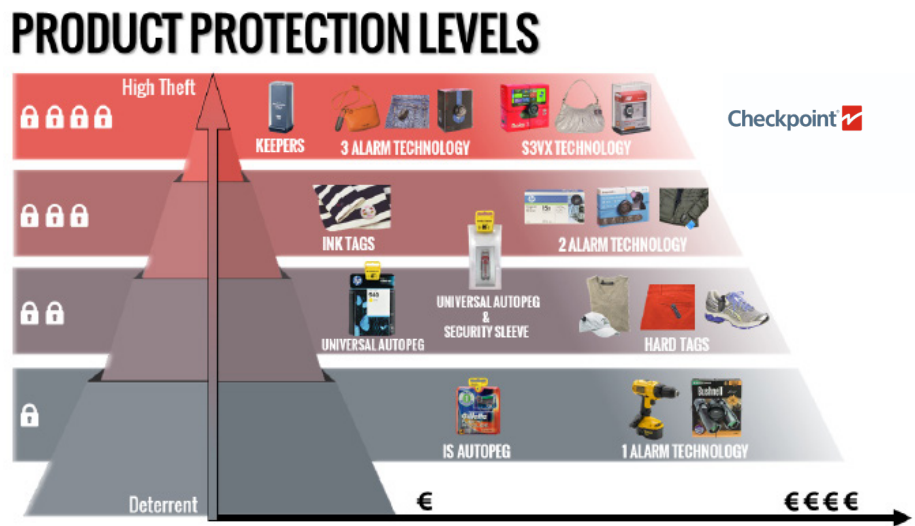
S3VX

RFID

INDEX

PRODUCT PROTECTION LEVELS

Alpha is well-known in the market for its high quality solutions, providing a broad range of anti-theft consumables for the majority of products on the market today, helping retailers increase profits by reducing theft.



Alpha is commonly associated with its High-Theft Solutions, like the S3vx, our best-in-class 3 Alarm protection, although the portfolio includes several deterrent solutions which stand out by their smart aesthetic, fast handling and easy operation.

To provide guidance we have defined a matrix with the different Alpha Product Protection Levels depending on the product value that is to be protected.

Across the new Alpha Catalogue, an icon will be placed next to every product as highlighted below:

LEVELS OF PROTECTION IN THIS CATALOG:



DETERRENT

Discourage the theft through instilling doubt or fear of the consequences



PREVENTION

The product activates EAS alarm if a breach occurs



HIGH THEFT

Most aggressive theft protection designed to help to defend the bottom line



RFID

Radio-frequency identification (RFID) uses electromagnetic fields to automatically identify and track tags attached to objects. The tags contain electronically-stored information

COULD YOU BE SELLING MORE?

CUSTOMISATION HAS BECOME DESIRABLE FOR RETAILERS AND E-RETAILERS OVER THE PAST FEW YEARS

Customisation has become a hot topic in the retail industry. As retailers keep adapting their display methods to attract shoppers, customised products give the opportunity to extend a strong, dynamic brand identity. When it comes to EAS Solutions, customisation options are plentiful.

Alpha wants to work with retailers in order to exceed their expectations with their loss prevention solutions, for example, incorporating brand colours or adding logos or text.

We are already working with Key Accounts across Europe to achieve exactly this. Please ask product management for further details and examples.



The Gillette keeper, Universal Autopeg and Adjustable bottle collar



Customised blue Autopeg

WHAT YOU NEED TO KNOW:

- Alpha High Theft Solutions would like to increase customer satisfaction by offering the possibility to customise its products.
- Customisations can be made from simply adding a logo, up to the more complex changing of manufacturing materials in order to achieve a specific coloured product for the retailer.
- All enquiries will be considered individually and the full scope of possibilities discussed with the account manager.

For any further questions or requests regarding the product customisation and MOQ, please, contact your local product management.



Customised Spider Wrap

Bottle Caps

Our bottle cap protection portfolio has been designed to **bring security, ease of use, and aesthetics to the forefront**. Find the ideal solution for nearly every size bottle.



Bottle caps

Product Line



Crystal Guard®

page 7



Crystal Guard® 2

page 8



1 Alarm Versa Guard™

page 9



Bottle Tag

page 10



Bottle Ring

page 11



Steel Grip™

page 12



Adjustable Bottle Collar

page 13

Bottle caps

Crystal Guard®



The clear design of the Crystal Guard bottle cap provides attractive benefit denial security for your merchandise. Four sizes offer a full range of coverage for a highly secure, perfect fit.

KEY FEATURES:

- Cap offers a strong visual deterrent and benefit denial protection
- Pain points under the base deter improper prying
- Clear top provides a clean product display and easy viewing of product labels
- 1 Alarm
- Comes in small, large, extra large and tall sizes
- "Alarm" print offers visual deterrent

SUGGESTED APPLICATIONS:

Wine bottles

Spirits

SUGGESTED DETACHERS BY LOCKING MECHANISM:

S3 Lock: S3 Handkeys (10006401, 10006402, 10006398, 10006399, 10006347, 9286317, 10006400, 9409394). More info page 79 of the catalogue.



ORDER CODE	SAP CODE	DESCRIPTION	INTERNAL DIA. (MIN-MAX)	EXTERNAL DIM. (H x W x D)	CARTON QTY.
S3BLSMND	9282738	Crystal Guard Small - AM	1.00"-1.24" Dia	1.74"H x 2.09"W x 2.63"D	50
S3BLSMRF	9282739	Crystal Guard Small - RF	(2.53-3.15 cmDia)	(4.43cmH x 5.30cmW x 6.67cmD)	50
S3BLLND	9282740	Crystal Guard Large - AM	1.21"-1.41" Dia	2.30"H x 2.31"W x 2.83"D	50
S3BLLRF	9282771	Crystal Guard Large - RF	(3.08-3.59 cmDia)	(5.83cmH x 5.87cmW x 7.19cmD)	50
S3BLXLND*	9282772	Crystal Guard Extra Large - AM	1.46"-1.64" Dia	1.66"H x 2.53"W x 3.05"D	50
S3BLXLRF	9282773	Crystal Guard Extra Large - RF	(3.70-4.17 cmDia)	(4.22cmH x 6.41cmW x 7.74cmD)	50
S3BSNND*	9282774	Crystal Guard SN Tall - AM	1.24"-1.31" Dia	2.71"H x 2.32"W x 2.85"D	50
S3BSNRF	9282775	Crystal Guard SN Tall - RF	(3.31-3.33 cmDia)	(6.89cmH x 5.89cmW x 7.24cmD)	50

*This product is available only as MTO (make to order)

Bottle caps

Crystal Guard® 2



The clear design of the Crystal Guard 2 bottle cap provides attractive benefit denial security for your merchandise. Two sizes offer a wide range of coverage for a highly secure, perfect fit.

KEY FEATURES:

- Cap offers a strong visual deterrent and benefit denial protection
- Pain points under the base deter improper prying
- Clear top provides a clean product display and easy viewing of product labels
- 1 Alarm
- Comes in small and large sizes
- Intuitive slider for locking and unlocking
- "Alarm" print offers visual deterrent

SUGGESTED APPLICATIONS:

Wine bottles

Spirits

SUGGESTED DETACHERS BY LOCKING MECHANISM:

S3 Lock: S3 Handkeys (10006401, 10006402, 10006398, 10006399, 10006347, 9286317, 10006400, 9409394). More info page 79 of the catalogue.

Clear top provides better product display

Intuitive slider for locking and unlocking

Benefit denial design



Pain points under the base deter improper prying



Small



Large



ORDER CODE	SAP CODE	DESCRIPTION	INTERNAL DIA. (MIN-MAX)	EXTERNAL DIM. (H x W x D)	CARTON QTY.
BO1418S3AM	10111861	Crystal Guard Small V2 - AM	1.00"-1.24" Dia	3.02"H x 2.33"W x 1.81"D	50
BO1418S3RF	10111862	Crystal Guard Small V2 - RF	(2.53-3.15 cmDia)	(7.67cmH x 5.92cmW x 4.60cmD)	50
BO1419S3AM	10112923	Crystal Guard Large V2 - AM	1.21"-1.41" Dia	3.28"H x 2.56"W x 2.37"D	50
BO1419S3RF	10112924	Crystal Guard Large V2 - RF	(3.08-3.59 cmDia)	(8.33cmH x 6.50cmW x 6.02cmD)	50

Bottle caps

1 Alarm Versa Guard™



Checkpoint's Versa Guard provides excellent versatility, optimal merchandising and benefit denial security. With both small and large options, the attractive Versa Guard will fit most of the spirit bottles on the market. Ease of application and removal makes in-store operations quick and intuitive.

KEY FEATURES:

- Ease of use and strong security ensure the cap delivers an impressive ROI
- Small and large size options will protect most bottles in the spirit market
- 1 Alarm
- Improved design withstands defeat
- Specifically designed to make application and removal fast and easy — can be done with one hand
- Vast increase in efficiency when handling multiple bottles at one time

SUGGESTED APPLICATIONS:

Spirits

SUGGESTED DETACHERS BY LOCKING MECHANISM:

S3 Lock: S3 Handkeys (10006401, 10006402, 10006398, 10006399, 10006347, 9286317, 10006400, 9409394). More info page 79 of the catalogue.

Hinge-style allows the cap to open from the side broadening bottle fit

Locking slide makes application and removal fast and efficient

Rubber guard helps prevent tampering and defeat

Clear front provides a clean product display



Small

Large



Fast to apply & remove

ORDER CODE	SAP CODE	DESCRIPTION	INTERNAL DIA. (MIN-MAX)	EXTERNAL DIM. (H x W x D)	CARTON QTY.
BO1422SS3AM	10115098	Versa Guard Small - AM	1.14"–1.26" Dia	3.42"H x 2.12"W x 2.15"D	50
BO1422SS3RF	10115326	Versa Guard Small - RF	(2.90–3.20 cmDia)	(8.69cmH x 5.38cmW x 5.46cmD)	50
BO1464LS3RF	10115327	Versa Guard Large - RF	1.38"–1.69" Dia	3.39"H x 2.42"W x 2.44"D	50
			(3.50–4.30 cmDia)	(8.61cmH x 6.15cmW x 6.20cmD)	

*This product is available only as MTO (make to order).

Bottle caps

Bottle Tag

This reusable bottle tag is designed to protect alcohol and other bottled products. Ideal for stores using door security systems, provides excellent performance and protection and releases with a standard lock detacher.

When pulled tight around the neck of a bottle it offers excellent protection. Soft coating on the wire prevents foil damage on bottles neck.



KEY FEATURES:

- 50mm diameter
- Protect high range of bottles
- Easy to apply and remove
- Steel cable with polyethylene pipe and plastic knob
- 8.2 Mhz Frequency
- ABS Material
- Available in Black and White
- Standard Lock
- Steel strip with plastic coated
- Reference 9162327 includes relocated lock to apply easily a price label directly on the tag

SUGGESTED APPLICATIONS:

Bottles

SUGGESTED DETACHERS BY LOCKING MECHANISM:

Standard Lock (9414839, 10111227, 9238054). More info page 80 and 81 of the catalogue.

Super Lock (10144026, 10144027, 10104110, 10106181). More info page 81 and 82 of the catalogue.



SAP CODE	DESCRIPTION	EXTERNAL DIM. (D x H)	CARTON QTY.
9446208	RF Bottle Tag BLK STL 8.2 Mhz 16,5 cm	2" D x 1.34"H (50mm x 34mm)	250
9504057	RF Bottle Tag WH SPL 8.2 Mhz 16,5 cm	2" D x 1.34"H (50mm x 34mm)	250
9513505	RF Bottle Tag WH SPL 8.2 Mhz 25 cm	2" D x 1.34"H (50mm x 34mm)	250
9506058	RF Bottle Tag WH STL 8.2 Mhz 16,5 cm	2" D x 1.34"H (50mm x 34mm)	250
9162327	RF Bottle Tag WH STL 8.2 Mhz	2" D x 1.34"H (50mm x 34mm)	250

Bottle Ring



Instruction video

Different product the best combination of protection, locking system, number of applications and cost. Its smart design allow to protect a wide range of bottle neck (wines, champagne, oil).

KEY FEATURES:

- Metal, standard & superlock
- Smart aesthetic
- Versatility

SUGGESTED APPLICATIONS:

Wine bottles

Spirits

SUGGESTED DETACHERS BY LOCKING MECHANISM:

Standard Lock (9414839, 10111227, 9238054). More info page 80 and 81 of the catalogue.



SAP CODE	DESCRIPTION	CARTON QTY.
9530105	Bottle Ring RF Super	500
9532011	Bottle Ring AM Super	500

Bottle caps

Steel Grip™



The Steel Grip rounds out Checkpoint's extensive bottle security portfolio. Created to protect lower-risk merchandise, this versatile solution features a strong, metal strap for maximum protection and a small, sleek profile for minimal impact to your product display.

KEY FEATURES:

- Provides a strong visual deterrent
- Available in both large and extra large sizes to fit more than 90% of wine and spirit bottles in the market
- Easy and intuitive to use and remove for minimal disruption at the Point of Sale (POS)
- 1 Alarm
- "Alarm" print offers visual deterrent

SUGGESTED APPLICATIONS:

Wine bottles

Spirits

Laundry care products

Auto care products



Steel Grip Bottle Wrap



Steel Grip XL Bottle Wrap

SUGGESTED DETACHERS BY LOCKING MECHANISM:

S3 Lock: S3 Handkeys (10006401, 10006402, 10006398, 10006399, 10006347, 9286317, 10006400, 9409394). More info page 79 of the catalogue.



ORDER CODE	SAP CODE	DESCRIPTION	INTERNAL DIA. (MIN-MAX)	EXTERNAL DIM. (H x W x D)	CARTON QTY.
S3BWMSND	10111859	Steel Grip Bottle Wrap - AM	0.84" - 1.33"Dia	1.13"H x 1.59"W x 1.98"D	100
S3BWMSRF	10111883	Steel Grip Bottle Wrap - RF	(2.13 - 3.38cmDia)	(2.87cmH x 4.04cmW x 5.02cmD)	100
S3BWMSXLND*	10006384	Steel Grip XL Bottle Wrap - AM	1.30" - 1.62"Dia	0.68"H x 2.09"W x 2.72"D	50
S3BWMSXLRF	10006385	Steel Grip XL Bottle Wrap - RF	(3.30 - 4.11cmDia)	(1.72cmH x 5.30cmW x 6.91cmD)	50

*This product is available only as MTO (make to order).

Bottle caps

Adjustable Bottle Collar



The Adjustable Bottle Collar combines a strong visual deterrent with maximum efficiency and adjustability permitting wine and spirits to be openly displayed — increasing sales.

KEY FEATURES:

- Designed to be applied and removed with one hand
- Pain points under collar to deter prying
- 1 Alarm
- Adjustable fit will accommodate a wide array of bottle neck sizes
- Super Lock clutch strengths
- Requires a Super XT Key

SUGGESTED APPLICATIONS:

Wine bottles

Spirits

SUGGESTED DETACHERS BY LOCKING MECHANISM:

Super Lock (10144026, 10144027, 10104110, 10106181). More info page 81 and 82 of the catalogue.

Designed to secure the collar as well as protect the bottle label and foil



Pain points under collar deter prying



SAP CODE	DESCRIPTION	INTERNAL DIA. (MIN-MAX)	EXTERNAL DIM. (H x W x D)	CARTON QTY.
9521401	Adj. Bottle Collar, Super, RF	0.97" – 1.58"Dia	0.86"H x 2.85"W x 2.80"D	100
9526601	Adj. Bottle Collar, Super, AM	(2.46 – 4.01cmD)	(2.18cmH x 7.24cmW x 7.11cmD)	100

CableLoks®

Designed to give you maximum protection with minimum loss, CableLoks **protect a wide range of high-theft goods.** They are reusable and flexible providing open display and increased sales.



CableLoks

Product Line



2 & 3 Alarm® CableLok®
page 16-17



2 & 3 Alarm®
Mini CableLok®
page 18



1, 2 & 3 Alarm®
Adjustable CableLok®
page 19



Cinch Wrap
page 20

CableLoks

2 & 3 Alarm® CableLok®



Instruction video

Specifically designed to help you lose less and sell more, CableLoks protect a wide range of high-theft hard and soft goods merchandise. CableLoks are reusable and completely portable, permitting open merchandising and free movement in the store which, in turn, minimizes sales assistance.

KEY FEATURES:

- 7x7 strand aircraft grade coaxial cable
- 2 or 3 alarm
- 95 dBA alarm
- Flashing LED light
- Isolated sound chamber
- Easy to apply and remove
- Tough, secure and reusable
- Battery powered RFID chip provides a stronger transmission and helps prevent body shadowing

SUGGESTED APPLICATIONS:

6" CableLok: Luxury handbags, backpacks, luggage, camera bags, briefcases, sports equipment, power tools, grills

48" CableLok: Coats, furs, dresses, men's and women's suits

3 ALARM TECHNOLOGY:

- EAS Protection: Activates EAS alarm if a breach occurs
- Early Detection: Alarms when merchandise is tampered with in store
- Extended Range: Self alarms if merchandise is removed from store

SUGGESTED DETACHERS BY LOCKING MECHANISM:

S3 Lock: S3 Handkeys (10006401, 10006402, 10006398, 10006399, 10006347, 9286317, 10006400, 9409394). More info page 79 of the catalogue.



ORDER CODE	SAP CODE	DESCRIPTION	EXTERNAL DIM. (L x W x D)	CARTON QTY.
AL2CLND	10103148	2 Alarm Coaxial CableLok AM - 6" Lanyard (15.24 cm)	Housing - 3.53"L x 1.62"W x 0.74"D	25
AL2CLRF	10103147	2 Alarm Coaxial CableLok RF - 6" Lanyard (15.24 cm)	(8.97 cmL x 4.11 cmW x 1.88 cmD)	25
AL2CLXLND	10103149	2 Alarm Coaxial CableLok AM - 48" Lanyard (121.92 cm)	Housing - 3.53"L x 1.62"W x 0.74"D	25
AL2CLXLRF	10103150	2 Alarm Coaxial CableLok RF - 48" Lanyard (121.92 cm)	(8.97 cmL x 4.11 cmW x 1.88 cmD)	25
AL3SCLNDL	10104081	3 Alarm Coaxial CableLok AM - 6" Lanyard (15.24 cm)	Housing - 3.50"L x 1.50"W x 0.75"D	25
AL3NCLRF	10104082	3 Alarm Coaxial CableLok RF - 6" Lanyard (15.24 cm)	(8.90 cmL x 3.80 cmW x 1.90 cmD)	25
AL3SCLNDL	10104083	3 Alarm Coaxial CableLok AM - 48" Lanyard (121.92 cm)	Housing - 3.50"L x 1.50"W x 0.75"D	25
AL3NCLRF	10104084	3 Alarm Coaxial CableLok RF - 48" Lanyard (121.92 cm)	(8.90 cmL x 3.80 cmW x 1.90 cmD)	25
AL3SCLNDL72	10107589	3 Alarm Coaxial CableLok AM - 72" Lanyard (182.88 cm)	Housing - 3.50"L x 1.50"W x 0.75"D	25
AL3NCLXLRF72	10107590	3 Alarm Coaxial CableLok RF - 72" Lanyard (182.88 cm)	(8.90 cmL x 3.80 cmW x 1.90 cmD)	25
RB2AM23RF-25	10102178	Replaceable Bayonet for 2&3 Alarm CableLok - RF	-	25
RB3AM	10102185	Replaceable Bayonet for 3 Alarm CableLok - AM	-	25

* This product is available only as MTO (make to order).



2 Alarm RFID



Eliminates hard-wire cabling and safety claims from customers tripping over power transformer and wire cables

CableLoks

2 & 3 Alarm® Mini CableLok®



Instruction video

The next generation of our 2 & 3 Alarm Mini CableLoks have made open merchandising easier and more seamless than ever. Big protection wrapped in a small, elegant package make this solution the perfect option for securing a wide variety merchandise.

KEY FEATURES:

- Attractive landscape design
- 7x7 strand aircraft grade cable
- Improved sound chamber
- 2 or 3 alarm
- 95+ dBA alarm
- Flashing LED light
- Easy to apply and remove
- Tough, secure and reusable
- S3vx version can only be opened when verified with specific store code in an S3vx Key



Eliminates hard-wire cabling and safety claims from customers tripping over power transformer and wire cables

Landscape design merchandises well with a wide variety of products

SUGGESTED APPLICATIONS:

3.5" CableLok: Shoes

6" CableLok: Luxury handbags, high fashion apparel, delicacies, belts, gloves and applicable packaged merchandise

12" CableLok: Shoe lassoing

SUGGESTED APPLICATIONS:

EAS Protection: Activates EAS alarm if a breach occurs

Early Detection: Alarms when merchandise is tampered with in store

Extended Range: Self alarms if merchandise is removed from store.



SUGGESTED DETACHERS BY LOCKING MECHANISM:

S3 Lock: S3 Handkeys (10006401, 10006402, 10006398, 10006399, 10006347, 9286317, 10006400, 9409394). More info page 79 of the catalogue.

ORDER CODE	SAP CODE	DESCRIPTION	EXTERNAL DIM. (H x W x D)	CARTON QTY.
CL14562ALAM4	10115422	2 Alarm Mini CableLok NG AM - 3.5" Lanyard (9.10cm)	Housing - 1.42"H x 1.89"W x 0.95"D	25
CL14562ALRF4	10115423	2 Alarm Mini CableLok NG RF - 3.5" Lanyard (9.10cm)	(6.60 cmH x 2.95 cmW x 2.03 cmD)	25
CL14562ALAM6	10115424	2 Alarm Mini CableLok NG AM - 6" Lanyard (15.24cm)	Housing - 1.42"H x 1.89"W x 0.95"D	25
CL14562ALRF6	10115425	2 Alarm Mini CableLok NG RF - 6" Lanyard (15.24cm)	(6.60 cmH x 2.95 cmW x 2.03 cmD)	25
CL14563ALAM4*	10115426	3 Alarm Mini CableLok NG AM - 3.5" Lanyard (9.10cm)	Housing - 1.42"H x 1.89"W x 0.95"D	25
CL14563ALRF4*	10115427	3 Alarm Mini CableLok NG RF - 3.5" Lanyard (9.10cm)	(6.60 cmH x 2.95 cmW x 2.03 cmD)	25
CL14563ALAM6	10115428	3 Alarm Mini CableLok NG AM - 6" Lanyard (15.24cm)	Housing - 1.42"H x 1.89"W x 0.95"D	25
CL14563ALRF6	10115429	3 Alarm Mini CableLok NG RF - 6" Lanyard (15.24cm)	(6.60 cmH x 2.95 cmW x 2.03 cmD)	25
CL14563ALAM12*	10115430	3 Alarm Mini CableLok NG AM - 12" Lanyard (30.48cm)	Housing - 1.42"H x 1.89"W x 0.95"D	25
			(6.60 cmH x 2.95 cmW x 2.03 cmD)	25

* This product is available only as MTO (make to order).

CableLoks

1, 2 & 3 Alarm® Adjustable CableLok®

Available in 1 and 3 Alarm technology, the patented design of the Adjustable CableLok provides strong and flexible security. The adjustable cable cinches down onto the merchandise creating a custom, protected fit every time.

KEY FEATURES:

- 7x7 strand aircraft grade cable
- 1, 2 or 3 alarm
- Two adjustable cable lengths — 6" & 18"
- Tough, secure and reusable
- Adjusts to fit tightly around merchandise

SUGGESTED APPLICATIONS:

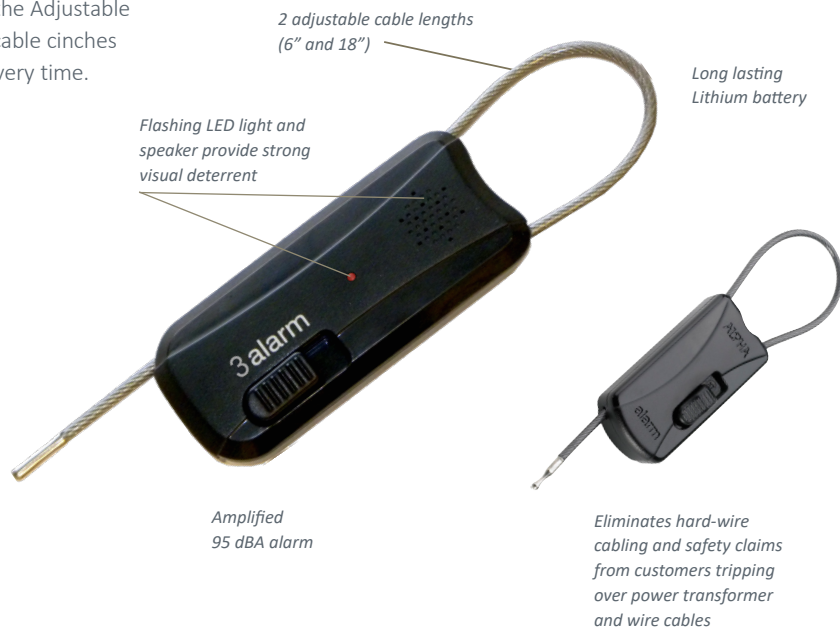
Copper tubing
Grills
Lawn mowers
Power hand tools
Sporting equipment
Briefcases
Display merchandise
Clamshell-packaged merchandise

3 ALARM TECHNOLOGY:

EAS Protection: Activates EAS alarm if a breach occurs
Early Detection: Alarms when merchandise is tampered with in store
Extended Range: Self alarms if merchandise is removed from store

SUGGESTED DETACHERS BY LOCKING MECHANISM:

S3 Lock: S3 Handkeys (10006401, 10006402, 10006398, 10006399, 10006347, 9286317, 10006400, 9409394). More info page 79 of the catalogue.



ORDER CODE	SAP CODE	DESCRIPTION	EXTERNAL DIM. (L x W x D)	CARTON QTY.
ADJCLSND	9298599	1 Alarm Adjustable CableLok AM - 6" (15.24 cm)	Housing - 2.68"L x 1.26"W x 0.70"D	25
ADJCLSRF	9298600	1 Alarm Adjustable CableLok RF - 6" (15.24 cm)	(6.80 cmL x 3.20 cmW x 1.77 cmD)	25
ADJCLLND*	9298664	1 Alarm Adjustable CableLok AM - 18" (45.75 cm)	Housing - 2.68"L x 1.26"W x 0.70"D	25
ADJCLLRF	9298665	1 Alarm Adjustable CableLok RF - 18" (45.75 cm)	(6.80 cmL x 3.20 cmW x 1.77 cmD)	25
2ALADJCLSND	10003271	2 Alarm Adjustable CableLok AM - 6" (15.24 cm)	Housing - 3.50"L x 1.50"W x 0.77"D	25
2ALADJCLSRF	10003272	2 Alarm Adjustable CableLok RF - 6" (15.24 cm)	(8.89 cmL x 3.78 cmW x 1.96 cmD)	25
2ALADJCLLRF	10003270	2 Alarm Adjustable CableLok RF - 18" (45.75 cm)	Housing - 2.68"L x 1.26"W x 0.70"D	25
			(6.80 cmL x 3.20 cmW x 1.77 cmD)	
3ALADJCLSRF	10003506	3 Alarm Adjustable CableLok RF - 6" (15.24 cm)	Housing - 3.50"L x 1.50"W x 0.77"D	25
			(8.89 cmL x 3.78 cmW x 1.96 cmD)	

* This product is available only as MTO (make to order).

CableLoks

Cinch Wrap

Hard-to-protect products demand the flexible security of Checkpoint's S3 Cinch Wraps. They clinch snugly to large or unwieldy merchandise, offering a visible deterrent to thieves. They are easy and intuitive to apply and remove.

KEY FEATURES:

- Reusable, one-piece design
- Available in two sizes: 7" and 9"
- Easy to apply and remove
- 1 Alarm activates EAS gates

SUGGESTED APPLICATIONS:

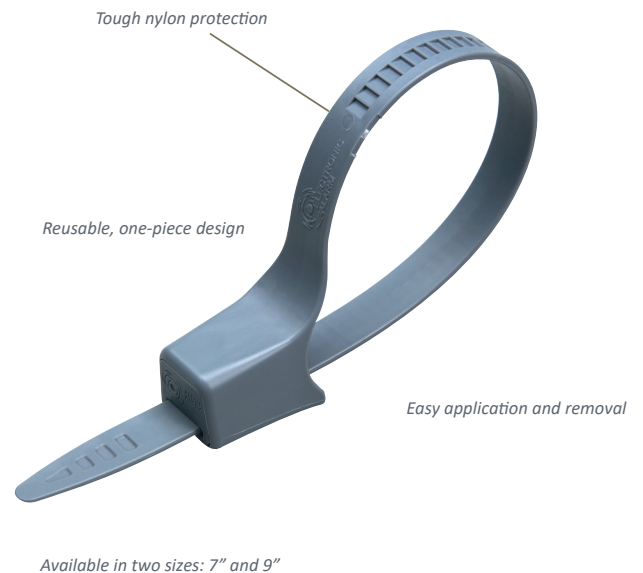
Sporting equipment

Anything with a handle

Spirits

SUGGESTED DETACHERS BY LOCKING MECHANISM:

S3 Lock: S3 Handkeys (10006401, 10006402, 10006398, 10006399, 10006347, 9286317, 10006400, 9409394). More info page 79 of the catalogue.



ORDER CODE	SAP CODE	DESCRIPTION	EXTERNAL DIM. (H x W x L)	CARTON WEIGHT	CARTON QTY.
SNWRAP2ND	9175079	Cinch Wrap 7" - AM	1.36"H x 0.99"W x 8.75"L	7 lbs. (4 kg)	200
SNWRAP2RFR	9169250	Cinch Wrap 7" - RF	(3.50 cmH x 2.50 cmW x 27.30 cmL)		
SNWRAP3ND	9183057	Cinch Wrap 9" - AM	1.36"H x 0.99"W x 12.75"L	7 lbs. (4 kg)	200
SNWRAP3RFR	9169251	Cinch Wrap 9" - RF	(3.50 cmH x 2.50 cmW x 32.40 cmL)		

Hard Tags

Checkpoint's robust line of Hard Tags provides unlimited options to protect your high-end fashion items securely and with versatility.



Hard Tags

Product Line



Peg Hook Secure Stop
page 25



Single & Dual Rod
Hang Tags
page 26



iS AUTOPEG™
page 27



Universal AUTOPEG™
page 28



Universal AUTOPEG™
Single Hole
page 29



Security Sleeve
for AUTOPEG™
page 30



Slice Tag
page 31



2 & 3 Alarm®
Bug Tag 2
page 32-33



2 & 3 Alarm®
StrapLok
page 34



Density Tag™
page 35



Optical Tag
page 36



OptiLok™
page 37

Hard Tags

Product Line



Multi-Tag™
page 38



O-Tag™
page 39



Jewellok™
page 40



Banded Hard Tag
page 41



Fashion3 Accessory Tag
page 42



Mag Tag™
page 43



Mini NeedleLok™ Tag
page 44



2 & 3 Alarm®
Hard Tag
page 45



Ink Tag
page 46

Hard Tags

Product Line



Gen3 Hard Tag
page 47



Hard Tag Apollo
page 48



Pebble Hard Tag
page 49



Button Hard Tag
page 50



Tao Tag
page 51



Golf Hard Tag
page 52



Round Hyperlock
page 53



Gen2 Hard Tag
page 54



Mini Hard Tag
page 55



3G Hard Tag
page 56



Pencil Hard Tag
page 57

Hard Tags

Peg Hook Secure Stop

Checkpoint's Peg Hook Secure Stop offers both security and flexibility for peg hooked merchandise. The small, durable tag allows retailers to both protect and openly merchandise product on a single hook, helping prevent a sweeping situation.

KEY FEATURES:

- Combines security and open merchandising
- Flexibility — customer controls merchandise that is available
- 5mm = 4.9mm < diameter peg hook
- 6mm = 6.0mm < diameter peg hook
- 7mm = 6.7mm < diameter peg hook

SUGGESTED APPLICATIONS:

Peg hooked merchandise

Spirits

SUGGESTED DETACHERS BY LOCKING MECHANISM:

S3 Lock: S3 Handkeys (10006401, 10006402, 10006398, 10006399, 10006347, 9286317, 10006400, 9409394). More info page 79 of the catalogue.

Available in three sizes:
5mm, 6mm and 7mm

Spring closure make application
and removal quick and easy



ORDER CODE	SAP CODE	DESCRIPTION	EXTERNAL DIM. (L x W x D)	CARTON QTY.
OT1426S35	10116552	Peg Hook Secure Stop V2, S3, 5mm (0.20")	1.50"L x 0.54"W x 0.66"D (3.81 cmL x 1.37 cmW x 1.68 cmD)	100
OT1426S36	10116553	Peg Hook Secure Stop V2, S3, 6mm (0.24")	1.50"L x 0.54"W x 0.66"D (3.81 cmL x 1.37 cmW x 1.68 cmD)	100
OT1426S37	10116554	Peg Hook Secure Stop V2, S3, 7mm (0.28")	1.50"L x 0.54"W x 0.66"D (3.81 cmL x 1.37 cmW x 1.68 cmD)	100

Hard Tags

Single & Dual Rod Hang Tags



The Single and Dual Rod Hang Tags are the perfect solution to effectively secure blister packages and clamshell-packaged merchandise. Checkpoint has a complete line of Hard Tags for your high-theft merchandise.

KEY FEATURES:

- Available in long and short pin styles
- Pins also sold separately as replaceable parts
- Tough, secure and reusable
- Easy to apply and remove
- 1 Alarm

SUGGESTED APPLICATIONS:

Clamshell packaged merchandise
Blister packages

SUGGESTED DETACHERS BY LOCKING MECHANISM:

Standard Lock (9414839, 10111227, 9238054). More info page 80 and 81 of the catalogue.

Super Lock (10144026, 10144027, 10104110, 10106181). More info page 81 and 82 of the catalogue.

Thin yet durable cable connects the module to the pin making for easy application and recycling

Extra-wide design accommodates dual rod peg hooks

Reinforced tab is strong enough to handle heavy merchandise



Dual Rod Hang Tag



Single Rod Hang Tag



ORDER CODE	SAP CODE	DESCRIPTION	EXTERNAL DIM. (H x W x D)	CARTON QTY.
HTAGSRND	9406523	Single Rod Hang Tag - AM	1.91"L x 1.20"W x 0.66"D	100
HTAGSRRF	9288267	Single Rod Hang Tag - RF	(4.85 cmL x 3.05 cmW x 1.67 cmD)	100
HTAGNSP	9406525	Single Rod Hang Tag Pin, Short - 0.50" (1.27 cm)	1.61"L x 0.75"W x 0.50"D	100
			(4.09 cmL x 1.91 cmW x 1.27 cmD)	
HTAGNLP*	9406526	Single Rod Hang Tag Pin, Long - 0.96" (2.44 cm)	1.61"L x 0.75"W x 0.96"D	100
			(4.09 cmL x 1.91 cmW x 2.44 cmD)	
HT1387SHAM	10109878	Dual Rod Hang Tag with Short Pin - AM	1.69"L x 0.71"W x 1.92"D	100
HT1387SHRF	10109879	Dual Rod Hang Tag with Short Pin - RF	(4.30 cmL x 1.80 cmW x 4.90 cmD)	100
HT1387LGAM	10109880	Dual Rod Hang Tag with Long Pin - AM	1.69"L x 0.71"W x 1.92"D	100
HT1387LGRF	10109891	Dual Rod Hang Tag with Long Pin - RF	(4.30 cmL x 1.80 cmW x 4.90 cmD)	100
HT1387SHPIN	10110597	Dual Rod Spare Pin, Short	0.50" (1.27 cm)	50
HT1387LGPIN	10110598	Dual Rod Spare Pin, Long	1.00" (2.54 cm)	50

*This product is available only as MTO (make to order)

Hard Tags

iS AUTOPEG™



The Checkpoint iS AutoPeg Tag is an effective deterrent for items displayed on peg hooks. This solution snaps quickly and safely on single or double-hole packaging and can be easily removed at POS for reuse.

KEY FEATURES:

- Pinless one-piece design is safe and effective
- Preserves product branding
- Quickly removable at POS
- Works with all detachers
- Tough, secure and reusable
- 1 Alarm



iS Autopeg



iS Autopeg EX

SUGGESTED APPLICATIONS:

Razor cartridges

Ink/toner

Mobile phone accessories

Cosmetics

Maximizes display opportunities

SUGGESTED DETACHERS BY LOCKING MECHANISM:

Standard Lock (9414839, 10111227, 9238054). More info page 80 and 81 of the catalogue.

Super Lock (10144026, 10144027, 10104110, 10106181). More info page 81 and 82 of the catalogue.



SAP CODE	DESCRIPTION	EXTERNAL DIM. (L x W x D)	CARTON QTY.
10115311	iS AutoPeg Grey - AM	1.78"L x 1.31"W x 0.58"D	500
10136492	iS AutoPeg Grey - RF	(45.2mmL x 33.4mmW x 14.8mmD)	500
10115672	iS AutoPeg Yellow - AM	1.78"L x 1.31"W x 0.58"D	500
10116990	iS AutoPeg Yellow - RF	(45.2mmL x 33.4mmW x 14.8mmD)	500
10121010	iS AutoPeg EX Yellow - AM	1.78"L x 1.57"W x 0.87"D	500
10121011	iS AutoPeg EX Yellow - RF	(45.2mmL x 40mmW x 22mmD)	500
10121013	iS AutoPeg EX Grey - AM	1.78"L x 1.57"W x 0.87"D	500
10121012	iS AutoPeg EX Grey - RF	(45.2mmL x 40mmW x 22mmD)	500

Hard Tags

Universal AutoPeg™



Instruction video

The Checkpoint Universal AutoPeg offers retailers a broader design for broader uses. Designed as a deterrent for high risk merchandise displayed on peg hooks, this solution snaps quickly and safely on single or double-hole packaging and can be easily removed at POS for reuse.

KEY FEATURES:

- Pinless one-piece design is safe and effective
- Preserves product branding
- Quickly removable at POS
- 1 Alarm
- Available in Standard Lock and Super Lock
(Opened respectively with Multi-Detacher and Super XT Key)
- Larger format accommodates a wider range of merchandise

SUGGESTED APPLICATIONS:

Electric Toothbrush
Ink/toner
Mobile phone accessories
Cosmetics
General Merchandise
High-Theft goods



Won't hinder product appearance



Personalised Universal Autopeg

Easy to apply and remove

Maximizes display opportunities



SUGGESTED DETACHERS BY LOCKING MECHANISM:

Standard Lock (9414839, 10111227, 9238054). More info page 80 and 81 of the catalogue.

Super Lock (10144026, 10144027, 10104110, 10106181). More info page 81 and 82 of the catalogue.

SAP CODE	DESCRIPTION	EXTERNAL DIM. (H x W x D)	CARTON QTY.
10139446*	IS UNIV AUTOPEG-AM-YELLOW-SPRLK	1.66"H x 1.88"W x 1.19"D	100
10139447*	IS UNIV AUTOPEG-RF-YELLOW-SPRLK	(42.17mmH x 47.72mmW x 30.18mmD)	100
10139448*	IS UNIV AUTOPEG-AM-YELLOW-STDLK	1.66"H x 1.88"W x 1.19"D	100
10139449*	IS UNIV AUTOPEG-RF-YELLOW-STDLK	(42.17mmH x 47.72mmW x 30.18mmD)	100
9515140	IS UNIV AUTOPEG-RF-YELLOW-STDLK GILLETTE	1.66"H x 1.88"W x 1.19"D (42.17mmH x 47.72mmW x 30.18mmD)	100

*This product is available for customisation if MOQ is respected

Hard Tags

Universal AutoPeg™ Single Hole - Anti-Sweep



Our most versatile AutoPeg solution to date allows a diverse range of merchandise to be securely displayed on anti-sweep peg hooks.

KEY FEATURES:

- Available in AM or RF technology
- Standard Lock locking mechanism
- Snaps quickly and safely on single-hole packaging
- Pinless one-piece design is safe and effective
- Bright yellow design
- Unlocks with an S3 HandKey, Multi-Detacher or Super XT Key

SUGGESTED APPLICATIONS:

Electric Toothbrush

Ink/toner

Mobile phone accessories

Cosmetics

General Merchandise

High-Theft goods



Maximizes display opportunities



Easy to apply and remove

SUGGESTED DETACHERS BY LOCKING MECHANISM:

Standard Lock (9414839, 10111227, 9238054). More info page 80 and 81 of the catalogue.



Won't hinder product appearance

SAP CODE	DESCRIPTION	EXTERNAL DIM. (W x L x D)	CARTON QTY.
10143147	iS Universal AutoPeg Yellow, Single Hole, Anti-Sweep, STDLK - AM	1 9/16"W x 1 3/4"L x 5/16"D	250
10143148	iS Universal AutoPeg Yellow, Single Hole, Anti-Sweep, STDLK - RF	(4 cmW x 4.4 mmL x 2.4 mmD)	250

Hard Tags

Security Sleeve for Universal AutoPeg

Specifically designed to help you lose less and sell more, Checkpoint's Security Sleeves enables retailers to secure high risk products that were not protected before.

Security Sleeves are used together with Universal Autopeg Tags that close the bags and allow to be displayed on peg hooks. The Universal Autopeg Tags attach easily to the Security Sleeves giving anti-theft protection and visual deterrence.

KEY FEATURES:

- 4 available sizes
- Food safe material suitable for indirect food contact (REACH certified)
- Easy to apply and remove
- BlackLock logo
- Reusable
- Provides excellent viewing of package contents

SUGGESTED APPLICATIONS:

Mobile phone cases

Packed sliced food

Chocolates

Chewing gums

Air fresheners

D.I.Y. products

Color pencils

USB

ReusableSpirits



Smart aesthetic



Smart aesthetic



Benefit denial

SAP CODE	DESCRIPTION	EXTERNAL DIM. (L x W)	CARTON QTY.
9502149	SECURITY SLEEVE FOR AUTOPEG - 80MMx180MM	7.08 L x 3.15" W (18 cmL x 8 cmW)	250
10138698	SECURITY SLEEVE FOR AUTOPEG - 118MMx215MM	8.46" L x 4.65" W (21,5 cmL x 11,8 cmW)	250
9502170	SECURITY SLEEVE FOR AUTOPEG - 143MMx302MM	11.89" L x 5.63" W (30,2 cmL x 14,3 cmW)	250
9501651	SECURITY SLEEVE FOR AUTOPEG - 225MMx315MM	12,40" L x 8.86" W (31,5 cmL x 22,5 cmW)	125

Hard Tags

Slice Tag

The Checkpoint Slice Tag is a versatile anti-theft solution for sliced food and vacumed blisters. It is a great lightweight visual theft deterrent.

KEY FEATURES:

- Available in RF technology
- Easy to apply and remove
- Black version
- Standard Lock
- 1 Alarm

SUGGESTED APPLICATIONS:

Flexible Packaging

Milk Bags

Food Bags

SUGGESTED DETACHERS BY LOCKING MECHANISM:

Standard Lock (9414839, 10111227, 9238054). More info page 80 and 81 of the catalogue.



Applied on vacumed blisters



SAP CODE	DESCRIPTION	EXTERNAL DIM. (L x W x D)	CARTON QTY.
9507485	Slice Tag - RF	6.8cmL x 1.5cmW x 4.0cmD (2.68"L x 0.59"W x 1.57"D)	100
9528687	Slice Tag - AM	6.8cmL x 1.5cmW x 4.0cmD (2.68"L x 0.59"W x 1.57"D)	100

Hard Tags

2 & 3 Alarm®

Bug Tag 2



Instruction video

The versatile Bug Tag 2 offers a wide range of product protection applications. The alarming tag provides both security and flexibility by combining a reusable module and disposable sled.

KEY FEATURES:

- 95 dBA alarm
- 2 or 3 alarm
- Flashing LED light
- Improved sound chamber
- Compact design
- Quick and easy to apply and remove
- Reusable module
- Disposable adhesive sled
- Snare accessory for securing display merchandise

SUGGESTED APPLICATIONS:

Tablets

Sell-through packaged merchandise

Display merchandise

3 ALARM TECHNOLOGY:

EAS Protection: Activates EAS alarm if a breach occurs

Early Detection: Alarms when merchandise is tampered with in store

Extended Range: Self alarms if merchandise is removed from store

SUGGESTED DETACHERS BY LOCKING MECHANISM:

S3 Lock: S3 Handkeys (10006401, 10006402, 10006398, 10006399, 10006347, 9286317, 10006400, 9409394). More info page 79 of the catalogue.



ORDER CODE	SAP CODE	DESCRIPTION	EXTERNAL DIM.	CARTON QTY.
HT1471S32ALAM	10116734	2 Alarm Bug Tag 2 - AM	0.55" x 2.56" Diameter	25
HT1471S32ALRF	10116735	2 Alarm Bug Tag 2 - RF	(1.4 x 6.5 cm Diameter)	25
HT1471S33ALAM	10116736	3 Alarm Bug Tag 2 - AM	0.55" x 2.56" Diameter	25
HT1471S33ALRF	10116737	3 Alarm Bug Tag 2 - RF	(1.4 x 6.5 cm Diameter)	25
HT1471SLED	10116752	Bug Tag 2 Sled	0.10" x 2.40" Diameter	50
HT1471SLEDHB	10137421	Bug Tag 2 Sled HB	(0.3 x 6.1 cm Diameter)	50
HT1471SLEDREMOV	10140719	Bug Tag 2 Sled w/ Removable Adhesive		250
HT1471SLEDVHBAMND	10116753	Bug Tag 2 Sled VHB AMND		25

NOTE: Bug Tag 2 is composed by Alarm Bug Tag 2 (2 or 3 alarm) + Bug Tag 2 Sled; Bug Tag 2 Snare is composed by Alarm Bug Tag 2 (2 or 3 alarm) + Bug Tag 2 Snare Sled + Bug Tag 2 Snare 7" Lanyard 60" Cable

Hard Tags

Bug Tag 2 snare + sensor



The versatile Bug Tag 2 offers a wide range of product protection applications. The alarming tag provides both security and flexibility by combining a reusable module and disposable sled.

KEY FEATURES:

- 95 dBA alarm
- Flashing LED light
- Improved sound chamber
- Compact design
- Quick and easy to apply and remove
- Reusable module
- Disposable adhesive sled
- Snare accessory for securing display merchandise

SUGGESTED APPLICATIONS:

Tablets

Sell-through packaged merchandise

Display merchandise

3 ALARM TECHNOLOGY:

EAS Protection: Activates EAS alarm if a breach occurs

Early Detection: Alarms when merchandise is tampered with in store

Extended Range: Self alarms if merchandise is removed from store

SUGGESTED DETACHERS BY LOCKING MECHANISM:

S3 Lock: S3 Handkeys (10006401, 10006402, 10006398, 10006399, 10006347, 9286317, 10006400, 9409394). More info page 79 of the catalogue.



Bug tag 2 Snare



ORDER CODE	SAP CODE	DESCRIPTION	EXTERNAL DIM.	CARTON QTY.
HT1510ADJCL7AM	10138123	Bug Tag 2 Snare 7" Lanyard 60" Cable - AM	1.5cmH x 4.6cmW x 4.1cmD	25
HT1510ADJCL7RF	10138083	Bug Tag 2 Snare 7" Lanyard 60" Cable - RF	(0.6"L x 1.81"W x 1.61"D)	25
HT1510ADJCL12AM	10139297	Bug Tag 2 Snare 12" Lanyard 60" Cable - AM		25
HT1510ADJCL12RF	10139296	Bug Tag 2 Snare 12" Lanyard 60" Cable - RF		25
HT1510SLEDVHB	10138135	Bug Tag 2 Snare Sled VHB	0.25" x 2.71" Diameter	50
HT1510SLEDREMOV	10141172	Bug Tag 2 Snare Sled w/ Removable Adhesive	(0.7 x 6.9 cm Diameter)	100

NOTE: Bug Tag 2 is composed by Alarm Bug Tag 2 (2 or 3 alarm) + Bug Tag 2 Sled; Bug Tag 2 Snare is composed by Alarm Bug Tag 2 (2 or 3 alarm) + Bug Tag 2 Snare Sled + Bug Tag 2 Snare 7" Lanyard 60" Cable

Hard Tags

2 & 3 Alarm StrapLok



Instruction video

Checkpoint's innovative StrapLok quickly attaches onto existing box nylon straps. Thanks to the **dynamic** tension adjustment, it is compatible with low-quality, loose straps found on boxes already pre-strapped from manufacturing. StrapLok actively monitors the tension of the strap and will only alarm if the strap is being cut, similar to our award-winning Spider Wrap®.

KEY FEATURES:

- AM or RF technology
- 2 or 3 Alarm®
- 95 dBA alarm
- Flashing LED light
- Isolated sound chamber
- Battery is replaceable
- S3 Lock, Standard Lock or Super Lock clutch strengths

3 ALARM TECHNOLOGY:

EAS Protection: Activates EAS alarm if a breach occurs

Early Detection: Alarms when merchandise is tampered with in store

Extended Range: Self alarms if merchandise is removed from store

SUGGESTED APPLICATIONS:

Boxed merchandise with nylon straps

SUGGESTED DETACHERS BY LOCKING MECHANISM:

S3 Lock: S3 Handkeys (10006401, 10006402, 10006398, 10006399, 10006347, 9286317, 10006400, 9409394). More info page 79 of the catalogue.

95 dBA alarm

Flashing LED light



Quick application and removal
saves labor time

Long lasting Lithium
battery



ORDER CODE	SAP CODE	DESCRIPTION	EXTERNAL DIM. (Diameter x Thickness)	CARTON QTY.
SP15182ALND	10138588	2 Alarm StrapLok - AM	3.2"L x 2.25"W x 1.58"H	25
SP15182ALRF	10138589	2 Alarm StrapLok - RF	(8.12cmL x 5.71cmW x 4.04cmH)	25
SP15183ALND	10138590	3 Alarm StrapLok - AM	3.2"L x 2.25"W x 1.58"H	25
SP15183ALRF	10138591	3 Alarm StrapLok - RF	(8.12cmL x 5.71cmW x 4.04cmH)	25
SP15182ALSTDND	10141400	2 Alarm StrapLok, Standard Lock - AM	3.2"L x 2.25"W x 1.58"H	25
SP15182ALSTDRF	10141414	2 Alarm StrapLok, Standard Lock - RF	(8.12cmL x 5.71cmW x 4.04cmH)	25
SP15182ALSUPND	10141416	2 Alarm StrapLok, Super Lock - AM	3.2"L x 2.25"W x 1.58"H	25
SP15182ALSUPRF	10141417	2 Alarm StrapLok, Super Lock - RF	(8.12cmL x 5.71cmW x 4.04cmH)	25

Hard Tags

Density Tag™



Instruction video

It's time to think **inside** the box. The new innovative Density Tag from Checkpoint protects valuable items **inside** packaged merchandise by "sensing" presence through the box. If the item is removed from the package, the change in measured density will result in an alarm. The Density Tag offers the ultimate protection of the actual merchandise **inside** the box.

KEY FEATURES:

- 95 dBA alarm
- 2 Alarm
- AM or RF technology
- Flashing LED light
- Isolated sound chamber
- Quick and easy to apply and remove

SUGGESTED APPLICATIONS:

Boxed merchandise*

* Internal merchandise must have sufficient density, cannot move inside the box and must be located close enough from the outside of the box to be sensed by the Density Tag.

SUGGESTED DETACHERS BY LOCKING MECHANISM:

S3 Lock: S3 Handkeys (10006401, 10006402, 10006398, 10006399, 10006347, 9286317, 10006400, 9409394). More info page 79 of the catalogue.



ORDER CODE	SAP CODE	DESCRIPTION	EXTERNAL DIM. (Diameter x Thickness)	CARTON QTY.
HT15082ALAM	10138596	2 Alarm Density Tag - AM	2"9/16 Dia x 9/16" H	25
HT15082ALRF	10138598	2 Alarm Density Tag - RF	(65mm Dia x 14mm H)	25
HT1508SLADH	10139661	Density Tag Sled w/Adhesive	2"3/8 diam. x 1/16" thick	250
HT1508SLREMOV	10140718	Density Tag Sled w/Removable Adhesive	(62mm Dia x 1.5mm thick)	250

Hard Tags

Optical Tag



The Optical Tag provides a durable construction whilst offering an adjustable, slim line design to improve the customer experience in-store. The Optical Tag has been tailored to cover both optician and retailer needs.

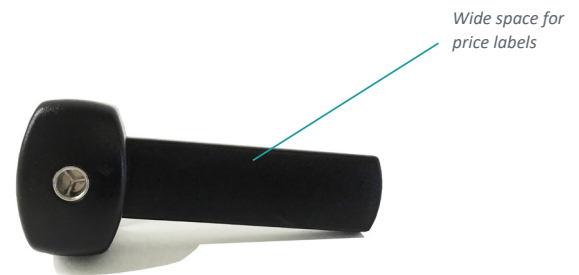
KEY FEATURES:

- Easy to fit and remove with special detaching tool
- 1 Alarm
- Extended arm to apply adhesive labels
- 4 available technologies: AM, RF, RFID or Dual RF/AM + RFID
- Available for small (glasses) or big frames (sunglasses)

SUGGESTED APPLICATIONS:

Eyewear

Frames



Easy to open and close thanks to special detaching tool

Two small rubber inserts inside the fastening ring protect the frame and assure the best adherence



SAP CODE	DESCRIPTION	EXTERNAL DIM. (L x W x D)	CARTON QTY.
9512199	Optical Tag Black RF Small	2.52"L x 0.75"W x 0.55"D	50
9512315	Optical Tag Black AM Small	(6.4 cmL x 1.9 cmW x 1.4 cmD)	50
9512310	Optical Tag Black RF Large	2.64"L x 1.02"W x 0.63"D	50
9512316	Optical Tag Black AM Large	(6.7 cmL x 2.6 cmW x 1.6 cmD)	50
9512319	Key Black Small	3.35"L (8.5cmL)	1
9512320	Key Coloured Large	4.29"L (10.9 cmL)	1

Hard Tags

OptiLok™



Instruction video

Protect this year's hottest sunglasses and prescription eyewear with OptiLok. The OptiLok provides durable construction with protective rubber pads that securely hold and protect the eyewear.

KEY FEATURES:

- Two grip sizes in AM or RF technology
- 1 Alarm
- Natural color rubber pads avoid frame damage as well as increase friction to prevent defeat
- Sliding wedge makes for quick application and removal
- Easy to recycle and reuse
- Unobtrusive
- Unlocks with an S3 HandKey, Multi-Detacher or Super XT Key

SUGGESTED APPLICATIONS:

Prescription glasses

Sunglasses

SUGGESTED DETACHERS BY LOCKING MECHANISM:

S3 Lock: S3 Handkeys (10006401, 10006402, 10006398, 10006399, 10006347, 9286317, 10006400, 9409394). More info page 79 of the catalogue.



Protective rubber pads to securely hold on to the frame



Sliding wedge closes and compresses the jaws onto the frame



ORDER CODE	SAP CODE	DESCRIPTION	EXTERNAL DIM. (L x H x D)	GRIP DEPTH	CARTON QTY.
HT1435BLKLGAM	10140810	S3 OptiLok, Black, Large - AM	2"1/16 L x 1"3/16 H x 1"1/8 D	1/32" – 1/4"D	100
HT1435BLKLGRF	10140811	S3 OptiLok, Black, Large - RF	(5.3 cmL x 3.1 cmH x 2.8 cmD)	(1.0mm – 5.5mm)	100
HT1435BLKXDAM	10140812	S3 OptiLok, Black, Extra Depth - AM	2"1/16 L x 1"3/16 H x 1"1/4 D	3/16" – 5/16"D	100
HT1435BLKXDRF	10140813	S3 OptiLok, Black, Extra Depth - RF	(5.3 cmL x 3.1 cmH x 3.1 cmD)	(4mm – 8mm)	100

Hard Tags

Multi-Tag™



The Multi-Tag provides durable construction with a protective cushion that securely holds and protects eyewear as well as a host of other items where you want to avoid piercing fabric with pins.

KEY FEATURES:

- S3 clutch
- 1 Alarm
- Tough, secure and reusable
- Easy to apply and remove

SUGGESTED APPLICATIONS:

Eyewear
Watches
Bracelets
Necklaces
Belts
Apparel

Durable construction with protective cushion that securely holds and protects merchandise



Easy to apply and remove

SUGGESTED DETACHERS BY LOCKING MECHANISM:

S3 Lock: S3 Handkeys (10006401, 10006402, 10006398, 10006399, 10006347, 9286317, 10006400, 9409394). More info page 79 of the catalogue.

Maximes display opportunities



ORDER CODE	SAP CODE	DESCRIPTION	EXTERNAL DIM. (H x W x D)	CARTON QTY.
S3OPTTAGND*	10009510	S3 Multi-Tag Slate Gray - AM	1.34"L x 1.24"W x 0.95"D	100
S3OPTTAGRF	10009511	S3 Multi-Tag Slate Gray - RF	(6.80 cmL x 4.10 cmW x 1.98 cmD)	100
S3OPTP	10009414	S3 Multi-Tag Slate Gray Pin - Serrated	0.90"L x 1.24"W x 0.54"D	100

*This product is available only as MTO (make to order)

Hard Tags

O-Tag™



The O-Tag provides protection for uniquely-shaped merchandise while allowing safe customer interaction.

It's perfect for golf clubs, baseball bats, corded electronics and much more. Its one-piece design provides ease of application and removal at checkout.

KEY FEATURES:

- Small and large
- 1 Alarm
- Inner cushion protection
- Tough, secure and reusable

SUGGESTED APPLICATIONS:

Small: Golf clubs, fishing rods, electrical cords

Large: Baseball bats

SUGGESTED DETACHERS BY LOCKING MECHANISM:

S3 Lock: S3 Handkeys (10006401, 10006402, 10006398, 10006399, 10006347, 9286317, 10006400, 9409394). More info page 79 of the catalogue.

Small O-Tag



Inner cushion protection

Large O-Tag



Easy to apply and remove

Maximizes display opportunities



Won't hinder product appearance



ORDER CODE	SAP CODE	DESCRIPTION	EXTERNAL DIM. (H x W x D)	CARTON QTY.
S3GBGCT73ZND	9282776	Small O-Tag, 3/8" Diameter (9mm) - AM	2.35"L x 1.50"W x 1.10"D	100
S3GBGCT73ZRFL	10102264	Small O-Tag, 3/8" Diameter (9mm) - RF	(5.96 cmL x 3.80 cmW x 2.80 cmD)	100
S3BT73ZRFL	10005494	Large O-Tag Gray, 1" Diameter (25.4mm) - RF	3.00"L x 2.30"W x 1.60"D	100
			(7.62 cmL x 5.85 cmW x 4.05 cmD)	

Hard Tags

JewelLok™



JewelLok for Loose Jewellery is also the perfect solution to protect a wide range of other merchandise.

KEY FEATURES:

- Smallest and lightest EAS tag on the market
- 1 Alarm
- Versatile — protects a wide range of merchandise
- Hardened steel hook is coated in plastic to prevent scratching and is resistant to tampering

SUGGESTED APPLICATIONS:

Jewelry
Watches
Shoes
Intimates/swimwear
Zippered merchandise
Belts

SUGGESTED DETACHERS BY LOCKING MECHANISM:

S3 Lock: S3 Handkeys (10006401, 10006402, 10006398, 10006399, 10006347, 9286317, 10006400, 9409394). More info page 79 of the catalogue.

Easy to apply and remove



Hardened steel hook coated in plastic to prevent scratches



For loose jewelry and other small items



Longer hook version extends the versatility



ORDER CODE	SAP CODE	DESCRIPTION	EXTERNAL DIM. (H x W x D)	CARTON QTY.
JWNECK100ND*	10106148	Loose Jewelry, Beige - AM	1.57"L x 0.63"H x 0.63"D	100
JWNECK100RF	10106149	Loose Jewelry, Beige - RF	(4.00 cmL x 1.60 cmH x 1.60 cmD)	100
JWNECKBLND100*	10106151	Loose Jewelry, Black - AM	1.57"L x 0.63"H x 0.63"D	100
JWNECKBLRF100*	10106150	Loose Jewelry, Black - RF	(4.00 cmL x 1.60 cmH x 1.60 cmD)	100
JWLNECK18WHRF100	10144724	Loose Jewelry, 18mm Hook, White - RF	2-1/4"L x 0-9/16"H x 0-9/16"D	100
JWLNECK18BLRF100	10144723	Loose Jewelry, 18mm Hook, Black - RF	(5.7 cmL x 1.5 cmH x 1.4 cmD)	100

**This product is available only as MTO (make to order)*

Hard Tags

Banded Hard Tag

Our Banded Hard Tag provides protection for items where a standard hard tag may not apply. Instead of two separate pieces, the pin is already attached to the tag making application quick and easy.

KEY FEATURES:

- Standard or Super clutch strengths
- 1 Alarm
- Eliminates loose pins on the floor or left in merchandise creating a safer work environment
- More economical — no pins are lost during the recycle process
- Even if band is cut, pin will prevent removal of the tag from the item
- Replacement pins are available to extend the life of the tag
- Requires Super XT Key or Multi-Detacher

SUGGESTED APPLICATIONS:

Shoes

Apparel

Intimates

Zippered packages

SUGGESTED DETACHERS BY LOCKING MECHANISM:

Standard Lock (9414839, 10111227, 9238054). More info page 80 and 81 of the catalogue.

Super Lock (10144026, 10144027, 10104110, 10106181). More info page 81 and 82 of the catalogue.

Band swivels to minimize defeat

Easy to apply and remove

Replaceable Band with Pin

Maximizes display opportunities



ORDER CODE	SAP CODE	DESCRIPTION	EXTERNAL DIM. (L x W x D)	CARTON QTY.
STD-HT1383-BLK-AM	10109606	Standard Banded Hard Tag, Black - AM	1.78"L x 0.637"W x 0.844"D	250
STD-HT1383-BLK-RF	10109607	Standard Banded Hard Tag, Black - RF	(4.52 cmL x 1.62 cmW x 2.14 cmH)	250
SPR-HT1383-BLK-AM	10109608	Super Banded Hard Tag, Black - AM	1.78"L x 0.637"W x 0.844"D	250
SPR-HT1383-BLK-RF	10109609	Super Banded Hard Tag, Black - RF	(4.52 cmL x 1.62 cmW x 2.14 cmH)	250
T1383-BLK-PIN	10110279	Spare Band & Pin	2.328"L x 0.695"W x 0.177"D (5.91 cmL x 1.76 cmW x 0.45 cmD)	25

Hard Tags

Fashion3 Accessory Tag



Checkpoint's small and sleek Fashion3 Accessory Tag complements your high-end apparel. The tag's design provides merchandising continuity with the entire Hard Tag line.

KEY FEATURES:

- S3, Standard Lock or Super Lock
- 1 Alarm
- Tag can be used with pin or lanyard
- Easy to recycle and reuse
- Unobtrusive
- Two color options — beige or black

SUGGESTED APPLICATIONS:

Shoes
Hats
Handbags
Briefcases
Luggage
Jewelry
Belts
Watches
Sportswear



Maximizes display opportunities



Recommended pin:
PINSWVL19

Tough, secure and reusable

Lanyard options: Transparent, 3" and 6"



SUGGESTED DETACHERS BY LOCKING MECHANISM:

Standard Lock (9414839, 10111227, 9238054). More info page 80 and 81 of the catalogue.

Super Lock (10144026, 10144027, 10104110, 10106181). More info page 81 and 82 of the catalogue.

ORDER CODE	SAP CODE	DESCRIPTION	EXTERNAL DIM. (L x W x D)	WEIGHT	CARTON QTY.
STFASH3ACYHTBGND*	10109192	Standard Fashion3 Accessory Tag Beige - AM	1.80" L x 0.49" W x 0.80" D	0.3 oz	250
STFASH3ACYHTBGRF	10109193	Standard Fashion3 Accessory Tag Beige - RF	(4.60 cmL x 1.20 cmW x 2.00 cmD)	9 grams	250
STFASH3ACYHTBKND	10109196	Standard Fashion3 Accessory Tag Black - AM	1.80" L x 0.49" W x 0.80" D	0.3 oz	250
STFASH3ACYHTBKRF	10109197	Standard Fashion3 Accessory Tag Black - RF	(4.60 cmL x 1.20 cmW x 2.00 cmD)	9 grams	250
SPFASH3ACYHTBGND*	10109194	Super Fashion3 Accessory Tag Beige - AM	1.80" L x 0.49" W x 0.80" D	0.3 oz	250
SPFASH3ACYHTBGRF	10109195	Super Fashion3 Accessory Tag Beige - RF	(4.60 cmL x 1.20 cmW x 2.00 cmD)	9 grams	250
SPFASH3ACYHTBKND*	10109198	Super Fashion3 Accessory Tag Black - AM	1.80" L x 0.49" W x 0.80" D	0.3 oz	250
SPFASH3ACYHTBKRF	10109199	Super Fashion3 Accessory Tag Black - RF	(4.60 cmL x 1.20 cmW x 2.00 cmD)	9 grams	250
FASH2LNYRD3INTP	10009326	Fashion2 Accessory Lanyard 3" - Transparent	3.00" L (7.62 cmL)	0.3 oz	250
FASH2LNYRD6INTP	10101406	Fashion2 Accessory Lanyard 6" - Transparent	6.00" L (15.24 cmL)	9 grams	250
PINSWVL16	9413653	Swivel Pin, Metal Flat Head, Serrated 5/8"	.625" L (1.60 cmL)	0.3 oz	250
PINSWVL19*	9413652	Swivel Pin, Metal Flat Head, Serrated 3/4"	.75" L (1.90 cmL)	9 grams	250

* This product is available only as MTO (make to order)

Hard Tags

Mag Tag™



Checkpoint has a complete line of Hard Tags for your high theft merchandise. The Mag Tag is versatile and highly effective, securing everything from soft goods to clamshell packaged merchandise.

KEY FEATURES:

- Pin or lanyard (3 lengths)
- 1 Alarm
- S3 clutch strengths
- Pin will not damage delicate fabrics
- Lanyard fits through shoe eyelets and other small openings
- Easy to apply and remove
- Light weight and unobtrusive

SUGGESTED APPLICATIONS:

Clothing
Hats
Zipper packaged items
Lingerie
Swimwear
Shoes
Eyewear
Purses
Belts
Watches
Saw blades
Sporting goods

Pin will not damage delicate fabrics



Easy to apply and remove

Light weight, unobtrusive design

Three lanyard lengths:
2", 3" and 9"



Maximizes display opportunities



SUGGESTED DETACHERS BY LOCKING MECHANISM:

S3 Lock: S3 Handkeys (10006401, 10006402, 10006398, 10006399, 10006347, 9286317, 10006400, 9409394). More info page 79 of the catalogue.

ORDER CODE	SAP CODE	DESCRIPTION	EXTERNAL DIM. (L x W x D)	CARTON QTY.
MAGTAGIIND	9261505	Mag Tag - AM	1.19"L x 1.31"W x 0.72"D	100
MAGTAGIIRF	9261506	Mag Tag - RF	(3.04 cmL x 3.32 cmW x 1.82 cmD)	100
MAGTAGSP	9169268	Mag Tag Pin - 0.69"	0.47"Dia x 0.63"L (1.19 cmDia x 1.60 cmL)	100
MTAGL2ACCYND	9261513	Mag Acc. Tag, 2" Black Lanyard - AM	1.02"L x 1.25"W x 1.00"D	100
MTAGL2ACCYRFR	9261514	Mag Acc. Tag, 2" Black Lanyard - RF	(2.60 cmL x 3.20 cmW x 2.50 cmD)	100
MTAGACCYND-100	9261508	Mag Acc. Tag, 9" Black Lanyard - AM	1.02"L x 1.25"W x 1.00"D	100
MTAGACCYRFR	9261510	Mag Acc. Tag, 9" Black Lanyard - RF	(2.60 cmL x 3.20 cmW x 2.50 cmD)	100

Hard Tags

Mini NeedleLok™ Tag



Instruction video

Designed specifically for the Apparel & Accessories market, the Mini NeedleLok uses a sharp needle preventing marks on the fabric. This one-piece tag enhances visual dissuasion by offering a benefit denial solution. Checkpoint's innovative Mini NeedleLok quickly attaches onto clothes and can be easily removed.

KEY FEATURES:

- Standard, Super or Hyper Lock clutch strengths
- Single-piece tag with an integrated needle, easier to manage by associates (single vs. multiple components)
- Provides freedom of placement on the garment (no longer forced to use a seam)
- The simple and easy closing mechanism prevents damage to the needle ensuring long fault-free operation.
- Unlocks with corresponding Multi-Detacher or Super S3 Key



Retractable button covers and protects needle



Sharp needle minimizes damage

Maximizes display opportunities



Wide opening allows freedom of placement on garment



SUGGESTED APPLICATIONS:

Fine apparel
Intimates
Light and thin fabric garments
Swim wear
Athletic wear

SUGGESTED DETACHERS BY LOCKING MECHANISM:

Standard Lock (9414839, 10111227, 9238054). More info page 80 and 81 of the catalogue.

Super Lock (10144026, 10144027, 10104110, 10106181). More info page 81 and 82 of the catalogue.

ORDER CODE	SAP CODE	DESCRIPTION	EXTERNAL DIM. (H x W x L)	WEIGHT (g)	CARTON QTY.
HT1550-BLK-STD-AM	9532016	Mini NeedleLok, Black, Standard - AM	11/16" W x 1"1/4 H x 2"1/16 D	16	250
HT1550-BLK-STD-RF	9532015	Mini NeedleLok, Black, Standard - RF	(18mmW x 32mmH x 53mmL)	16	250
HT1550-BLK-SPR-AM	9532017	Mini NeedleLok, Black, Super - AM	11/16" W x 1"1/4 H x 2"1/16 D	16	250
HT1550-BLK-SPR-RF	9532014	Mini NeedleLok, Black, Super - RF	(18mmW x 32mmH x 53mmL)	16	250
-	10148317	Mini NeedleLok, Black, Hyper - AM	11/16" W x 1"1/4 H x 2"1/16 D	16	250
-	9536130	Mini NeedleLok, Black, Hyper - RF	(18mmW x 32mmH x 53mmL)	16	250

Hard Tags

2 & 3 Alarm® Hard Tag



Specifically designed to help you lose less and sell more, Checkpoint's 2 and 3 Alarm Hard Tags protect your high-end fashion items. The sleek compliments your high-end apparel while the unified look of the entire Hard Tag line provides merchandising continuity.

KEY FEATURES:

- 95 dBA alarm
- 2 or 3 alarm
- Flashing LED light
- Isolated sound chamber
- Easy to apply and remove
- Tough, secure and reusable
- Requires Super S3 Key or Multi-Detacher

SUGGESTED APPLICATIONS:

Jeans
Trousers
Jackets
Suits
Sweaters



AM Technology



RF Technology



Flashing LED light

95 dBA alarm

Long lasting Lithium battery



3 ALARM TECHNOLOGY:

EAS Protection: Activates EAS alarm if a breach occurs

Early Detection: Alarms when merchandise is tampered with in store

Extended Range: Self alarms if merchandise is removed from store

SUGGESTED DETACHERS BY LOCKING MECHANISM:

Standard Lock (9414839, 10111227, 9238054). More info page 80 and 81 of the catalogue.

Super Lock (10144026, 10144027, 10104110, 10106181). More info page 81 and 82 of the catalogue.

ORDER CODE	SAP CODE	DESCRIPTION	EXTERNAL DIM. (L x W x D)	CARTON QTY.
XTAL2TAGND	10102826	2 Alarm Hard Tag XT - AM	2.68" L x 1.62" W x 0.78" D (6.80 cmL x 4.10 cmW x 1.98 cmD)	25
XTAL2TAGRF	10102851	2 Alarm Hard Tag XT - RF	2.68" L x 1.85" W x 0.82" D (6.80 cmL x 4.70 cmW x 2.08 cmD)	25
XTAL2TAGBLND*	10007698	3 Alarm Hard Tag XT - AM	2.68" L x 1.62" W x 0.78" D (6.80 cmL x 4.10 cmW x 1.98 cmD)	25
AL3TAGBLRF	10101303	3 Alarm Hard Tag XT - RF	2.68" L x 1.85" W x 0.82" D (6.80 cmL x 4.70 cmW x 2.08 cmD)	25
AL3P01	10003530	Pin (2.29 cmL x 1.91 cm Diameter)	0.90" L x 0.75" Diameter	50

* This product is available only as MTO (make to order).

Hard Tags

Ink Tag

The Ink Tag is perfect for a variety of apparel merchandise. If an item secured with an Ink Tag is stolen, the merchandise will be ruined when the thief tries to remove the Ink Tag, denying the thief the benefit of the product.

KEY FEATURES:

- S3, Standard or Super Lock clutch strengths
- 1 Alarm
- Multiple color options
- Easy to recycle and reuse
- Unobtrusive
- Transparent round head pin
- Tough, secure and reusable
- Easy to apply and remove

SUGGESTED APPLICATIONS:

Apparel

SUGGESTED DETACHERS BY LOCKING MECHANISM:

Standard Lock (9414839, 10111227, 9238054). More info page 80 and 81 of the catalogue.

Super Lock (10144026, 10144027, 10104110, 10106181). More info page 81 and 82 of the catalogue.

RF Technology - Beige



Transparent round head pin



Maximizes display opportunities



Perfect for a variety of apparel merchandise



ORDER CODE	SAP CODE	DESCRIPTION	EXTERNAL DIM. (Diameter x Thickness)	CARTON QTY.
STTAGINKBGRF	9410879	Standard Ink Tag Round 2", Beige - RF	2.00" Diameter x 0.85" Thick (5.83cm Diameter x 2.20cm Thick)	250
STTAGINKBGKRF	9440657	Standard Ink Tag Round 2", Black - RF	2.00" Diameter x 0.85" Thick (5.83cm Diameter x 2.20cm Thick)	250
SPTAGINKBGRF	9410971	Super Ink Tag Round 2", Beige - RF	2.00" Diameter x 0.85" Thick (5.83cm Diameter x 2.20cm Thick)	250
PINTRSP2INH	9410973	Pin 2" Transparent Round Head 1/2" Long	2.00" Diameter x 0.95" Thick (5.83cm Diameter x 2.40cm Thick)	250

Hard Tags

Gen 3 Hard Tag

Gen 3 Hard Tags are available in a selection of performance levels (Specialty, Enhanced & ECON), all designed to protect high-risk items, including a broad range of apparel merchandise and accessories. Their superior accuracy and precision facilitate accurate alarm management—and their aesthetically pleasing rounded look prevents prying, ensuring that merchandise remains protected. Select Gen 3 Hard Tags can be applied @Source, in-store or both. All are reusable and easily removed at POS with Checkpoint Super detacher.

KEY FEATURES:

- Sleek round design; strong visual deterrence
- 1 Alarm
- Closes almost seamlessly; difficult to defeat (even with a tool)
- Improves merchandise availability
- Protects merchandise without damaging fabric
- Available for @Source and/or in-store application
- Easily removed at POS with Checkpoint Super detacher
- Custom printing options available

SUGGESTED APPLICATIONS:

Apparel merchandise

SUGGESTED DETACHERS BY LOCKING MECHANISM:

Super Lock (10144026, 10144027, 10104110, 10106181). More info page 81 and 82 of the catalogue.



SAP CODE	DESCRIPTION	EXTERNAL DIM. (Diameter)	CARTON QTY.
10109223	Gen 3 Round Hard Tag @Source White Standard w/ Tamper Pin	1.8" D (46mm)	500
10138655	Gen 3 Round Hard Tag @Source Black w/ Tamper Pin	1.8" D (46mm)	500

Reusable Hard Tags

Hard Tag Apollo



The Hard Tag Apollo provides an effective solution for tagging valuable merchandise in store to prevent against retail theft.

The Apollo allows a high visibility and lightweight design. Strong and durable, this tag can be used for a wide variety of applications, especially the apparel items.

KEY FEATURES:

- 8.2MHz Frequency
- 1 Alarm
- Standard Lock
- Compact and lightweight design
- Durable construction



SUGGESTED APPLICATIONS:

Apparel
Accessories
Trousers
Pullovers

SUGGESTED DETACHERS BY LOCKING MECHANISM:

Standard Lock (9414839, 10111227, 9238054). More info page 80 and 81 of the catalogue.



SAP CODE	DESCRIPTION	EXTERNAL DIM. (Diameter)	CARTON QTY.
9424330	Hard Tag Apollo RF Ivory	1.96"D (50mm)	250
9425102	Hard Tag Apollo RF Grey	1.96"D (50mm)	250

Hard Tags

Emperor Panda

The Emperor Panda is the ideal combination of good performance and price. Its compact and soft curves design makes it a perfect deterrent for any apparel products, even for the most delicate ones. In order to expand the range of applications and vertical markets, the Emperor Panda can also be combined with a lanyard*.

KEY FEATURES:

- 1 Alarm
- Grey, other colors available if MOQ is respected
- Difficult to defeat with common tools; retains its effectiveness even after repeated use
- RF technology
- Available in Standard and Super Lock
- Metal pin included

SUGGESTED APPLICATIONS:

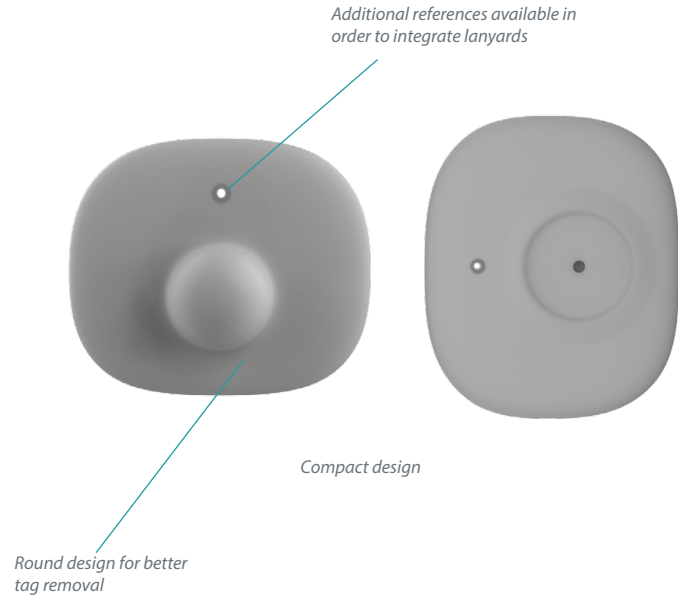
Fine apparel

Intimates

Light and thin fabric garments

Swim wear

Athletic wear



Design improve product deterrence



SAP CODE	DESCRIPTION	EXTERNAL DIM. (H x W x L)	WEIGHT (g)	CARTON QTY.
10148129*	Emperor Panda RF Std Grey w/ metal pin	18.1mmH x 42.1mmW x 50.05mmL	7.6	1000

*To order the Steel lanyard, please refer to the Lanyards product page at the end of the Hard Tags section, ref. 9203023

Hard Tags

Emperor Penguin

The Emperor Penguin is a Checkpoint branded HT with an excellent EAS performance and price. Its small design with low weight (7 grams) and soft curves make the Emperor Penguin the ideal solution for delicates and accessories. In order to expand the range of applications and vertical markets, the Emperor Panda can also be combined with a lanyard*.

KEY FEATURES:

- 1 Alarm
- White, other colors available if MOQ is respected
- Difficult to defeat with common tools; retains its effectiveness even after repeated use
- RF Technology
- Available in Standard and Super Lock
- Plastic pin included

SUGGESTED APPLICATIONS:

Fine apparel

Intimates

Light and thin fabric garments

Swim wear

Athletic wear

Soft curves defining locking surface to better detach the tag

Designed to integrate lanyards

Checkpoint branded design

Design improve product deterrence

SAP CODE	DESCRIPTION	EXTERNAL DIM. (H x W x L)	WEIGHT (g)	CARTON QTY.
10148126*	Emperor Penguin RF Std White w/ plastic pin	17.35mmH x 34.1mmW x 48.5mmL	7.3	1000

*To order the Steel lanyard, please refer to the Lanyards product page at the end of the Hard Tags section, ref. 9203023

Hard Tags

Fighter Hard Tags Serie

Designed specifically for the Low cost market, the Fighter Hard Tags Serie combines a good performance with one of the lowest price in the market. The compact design with soft curves makes it a perfect deterrent for any apparel products. In order to expand the range of applications and vertical markets, the Fighter Hard Tags Serie can be easily combined with a lanyard*.

KEY FEATURES:

- 1 Alarm
- Black, other colors available if MOQ is respected
- Difficult to defeat with common tools; retains its effectiveness even after repeated use
- Available in Standard and Super Lock
- RF technology
- Metal pin included

SUGGESTED APPLICATIONS:

Fine apparel

Intimates

Light and thin fabric garments

Swim wear

Athletic wear

Compact design



Soft curves defining locking surface to better detach the tag

Design improve product deterrence



SAP CODE	DESCRIPTION	EXTERNAL DIM. (H x W x L)	WEIGHT (g)	CARTON QTY.
10148127*	Fighter Penguin RF Std Black w/ metal pin	17.75mmH x 34.7mmW x 51.1mmL	6.3	1000
10148130*	Fighter Panda RF Std Black w/ metal pin	17.85mmH x 42.1mmW x 50.05mmL	7.5	1000

*To order the Steel lanyard, please refer to the Lanyards product page at the end of the Hard Tags section , ref. 9203023

Reusable Hard Tags

Pebble Hard Tag

The Pebble Hard Tag is discreet and lightweight. The smallest apparel hard tag in Checkpoint's portfolio. This tag is the smallest one in Checkpoint's portfolio and is the perfect solution for small garments. It is ideal for notch for delicates, belts, braces, lingerie, bags or shoes.

This tag is also a great visual deterrent against theft, and will help prevent loss of your merchandise.



KEY FEATURES:

- Super Lock System
- 1 Alarm
- Plastic ABS material
- 8.2MHz frequency
- Easy to apply and remove
- Easily Reusable

SUGGESTED APPLICATIONS:

Fashion items

Small items

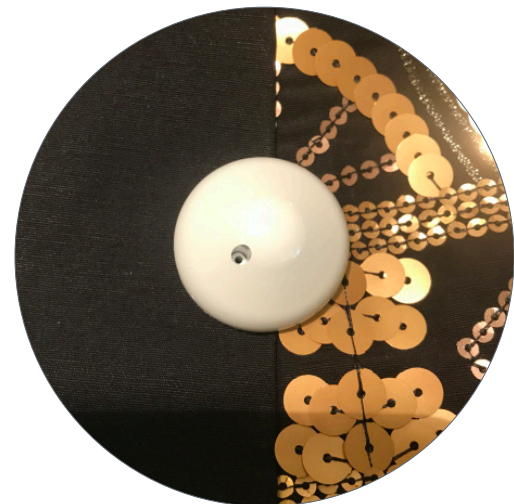
Belts

Delicates

Lingerie

Handbags

Scarf



SUGGESTED DETACHERS BY LOCKING MECHANISM:

Super Lock (10144026, 10144027, 10104110, 10106181). More info page 81 and 82 of the catalogue.

SAP CODE	DESCRIPTION	EXTERNAL DIM. (L)	CARTON QTY.
9408191	Pebble Hard Tag RF White Super Lock	1.29"L (33mm)	250
9408192	Pebble Hard Tag RF Black Super Lock	1.29"L (33mm)	250
9206878	Pebble Hard Tag RF White Super Lock	1.18"L (30mm)	250
9206879	Pebble Hard Tag RF Black Super Lock	1.18"L (30mm)	250

Reusable Hard Tags

Button Hard Tag

The Button Hard Tag is one of the smallest Round tags available; ideal for delicate clothing like swimsuits and lingerie. It is an aesthetically appealing visual theft deterrent for high end retail stores where looks are just as important as security.

The Button Hard Tag can be used with a loop lanyard with pin, or pin lanyard to protect shoes, bags, and some sports equipment.

KEY FEATURES:

- Small and light item
- 1 Alarm
- Available in Grey, Black and White
- Available in Standard and Super
- ABS material
- 8.2MHz Frequency

SUGGESTED APPLICATIONS:

Apparel

Delicate Apparel items

Kids Apparel

Shoes

Underwear

Sport items

SUGGESTED DETACHERS BY LOCKING MECHANISM:

Standard Lock (9414839, 10111227, 9238054). More info page 80 and 81 of the catalogue.

Super Lock (10144026, 10144027, 10104110, 10106181). More info page 81 and 82 of the catalogue.



SAP CODE	DESCRIPTION	EXTERNAL DIM. (Diameter)	CARTON QTY.
7285355	Button Hard Tag Black Standard Lock	1.49" D (38 mm)	250
7275659	Button Hard Tag White Standard Lock	1.49" D (38 mm)	250
7378980	Button Hard Tag Black Super Lock	1.49" D (38 mm)	250
7726868	Button Hard Tag Grey Super Lock	1.49" D (38 mm)	250
7130193	Button Hard Tag White Super Lock	1.49" D (38 mm)	250

Reusable Hard Tags

Tao Tag

The Tao Tag provides an effective solution for tagging valuable merchandise in store to prevent against retail theft. The Tao Tag is perfect for a variety of apparel merchandise. Its lightweight and its ease of use allow a fast application and removal.

KEY FEATURES:

- Super Lock clutch strength
- 1 Alarm
- Available in Black
- Easy to recycle and reuse
- Unobtrusive
- Easy to apply and remove

SUGGESTED APPLICATIONS:

Apparel

SUGGESTED DETACHERS BY LOCKING MECHANISM:

Super Lock (10144026, 10144027, 10104110, 10106181). More info page 81 and 82 of the catalogue.



Perfect for a variety of apparel merchandise



SAP CODE	DESCRIPTION	EXTERNAL DIM. (Diameter x Thickness)	CARTON QTY.
9440651	HT RF TAO BLACK SPL 8.2 50MM	2.00" Diameter x 0.85" Thick (5cm Diameter x 1.83cm Thick)	200
9440652	PIN TAO ER013 BLACK		200

Reusable Hard Tags

Golf Hard Tag Mini

The Golf Hard tag is a great visual deterrent. The RF round Tag has the added security of enclosing some of the clothing inside the pin. By locking some of the cloth in the tag a shoplifter is forced to cut the entire tag out. Only available with Super Lock. Standard magnetic detachers will not work with the Golf Tag making it even more difficult for shoplifters to defeat.

KEY FEATURES:

- Tough, secure and reusable
- 1 Alarm
- Easy to apply and remove
- 8.2MHz Frequency
- Super Lock

SUGGESTED APPLICATIONS:

Apparel

SUGGESTED DETACHERS BY LOCKING MECHANISM:

Super Lock (10144026, 10144027, 10104110, 10106181). More info page 81 and 82 of the catalogue.



SAP CODE	DESCRIPTION	EXTERNAL DIM. (Diameter)	CARTON QTY.
9237964	Golf Hard Tag Mini o Medium Super Lock Black	2.16" D (55mm)	500
9236801	Golf Hard Tag Maxi Super Lock White	2.44" D (62mm)	500
9236802	Golf Hard Tag Maxi Super Lock Black	2.44" D (62mm)	500

Reusable Hard Tags

Round Hyperlock

The versatility of the Round Hyperlock enables to protect any apparel items. The lock is tough and makes it difficult to defeat. The tag can't be removed by most common tools. The Round Hyperlock making removal with a standard magnet impossible.

KEY FEATURES:

- 8.2MHz Frequency
- Hyper Lock
- 1 Alarm

SUGGESTED APPLICATIONS:

Apparel merchandise



SAP CODE	DESCRIPTION	EXTERNAL DIM. (Diameter)	CARTON QTY.
9294052	Round Hyperlock HT@Source with Pin 19mm	1.96"L (50mm)	500
10138683	RFID Clip for Round Hyperlock HT	1.96"L (50mm)	500

Hard Tags

Gen 2 Hard Tag

Gen 2 Hard Tag is ideal for protecting a broad range of apparel merchandise. Retailers using HT@S have realised immediate and significant benefit from eliminating in-store labour, reducing shrink and improving on shelf availability.

The Checkpoint HT@S program fits perfectly for specialty, mass and department store apparel retailers who manage a complete or partial closed loop supply chain.

KEY FEATURES:

- Strong visual deterrence
- Reusable @Source
- 1 Alarm
- Eliminates damaging of apparel
- Checkpoint's smallest & lightest weight hard tag and pin combo
- No impact on standardized packaging
- Designed specifically for application @Source
- 100% environmentally friendly
- ABS Plastic material
- 8.2MHz frequency
- Available in both Standard or SuperLock

SUGGESTED APPLICATIONS:

Apparel merchandise

SUGGESTED DETACHERS BY LOCKING MECHANISM:

Standard Lock (9414839, 10111227, 9238054). More info page 80 and 81 of the catalogue.

Super Lock (10144026, 10144027, 10104110, 10106181). More info page 81 and 82 of the catalogue.



Quickly removable at POS



SAP CODE	DESCRIPTION	EXTERNAL DIM. (H x W x D)	CARTON QTY.
7311288	Gen 2 Hard Tag Standard	2.0 x 1.0 x 0.6 (inches); 50.8 x 25.4 x 15.24 (mm)	1000
10100856	Gen 2 Hard Tag Super	2.0 x 1.0 x 0.6 (inches); 50.8 x 25.4 x 15.24 (mm)	1000

Reusable Hard Tags

Mini Hard Tag

Mini Hard Tags use a flat head, cone, or Ink pin to secure sensor to merchandise. The Mini Hard Tag can be used with a loop lanyard with pin, or pin lanyard to protect shoes, bags, and some sports equipment. This retail store hard tag requires a standard magnetic detacher to remove the pin.

KEY FEATURES:

- Simple design
- 1 Alarm
- Strong deterrent
- Ease of application
- 8.2MHz Frequency
- Standard Lock

SUGGESTED APPLICATIONS:

Apparel

Accessories

SUGGESTED DETACHERS BY LOCKING MECHANISM:

Standard Lock (9414839, 10111227, 9238054). More info page 80 and 81 of the catalogue.



SAP CODE	DESCRIPTION	EXTERNAL DIM. (L x W)	CARTON QTY.
9446339	Mini Hard Tag STL 8.2 Mhz Black	2.08"L x 1.73"W (53mm x 44mm)	500
9526774	Mini Hard Tag SPR 8.2 Mhz Black	2.08"L x 1.73"W (53mm x 44mm)	500
10110561	Mini Hard Tag SPR 8.2 Mhz Grey	2.08"L x 1.73"W (53mm x 44mm)	500

Reusable Hard Tags

3G Hard Tag

Designed to protect a wide range of merchandise from apparel to other merchandise, the 3G Hard Tag was built with a high signal amplitude and a strong lock pull strength.

With increased durability, the design positions the bottom half of the tag into the top half of the tag, creating a “glove-like” fit for smooth edges and a more attractive appearance.

KEY FEATURES:

- 8.2MHz Frequency
- Standard Lock
- 1 Alarm

SUGGESTED APPLICATIONS:

Apparel

SUGGESTED DETACHERS BY LOCKING MECHANISM:

Standard Lock (9414839, 10111227, 9238054). More info page 80 and 81 of the catalogue.



SAP CODE	DESCRIPTION	EXTERNAL DIM. (L x W)	CARTON QTY.
7321712	3G Hard Tag Grey/White Standard Lock	2.08" L x 1.73" W (53mm x 44mm)	250
7853370	3G Hard Tag Grey/White Super Lock	2.08" L x 1.73" W (53mm x 44mm)	250
9420292	HT RF 3G BLK SPL 8.2MHZ 53X44MM		1000
9215123	3G Hardtag incl. Pin 18 mm		

Reusable Hard Tags

Pencil Hard Tag

The RF Pencil Tag is one of the smallest Hard Tag available in Checkpoint today. With its unique, lightweight design it is very good solution to protect sensitive and high quality goods. The RF Pencil Tags are available in super and standard lock and can be used with any kind of pin out of our pin range.

KEY FEATURES:

- Lightest and smallest EAS tag available
- 8.2MHz Frequency
- Super Lock
- 1 Alarm



SUGGESTED APPLICATIONS:

High quality goods

SUGGESTED DETACHERS BY LOCKING MECHANISM:

Super Lock (10144026, 10144027, 10104110, 10106181). More info page 81 and 82 of the catalogue.



SAP CODE	DESCRIPTION	EXTERNAL DIM. (L x W x D)	CARTON QTY.
10105108	Pencil Hard Tag RF Super Lock	2.08"L x 0.55"W x 0.74"H (53mm x 14mm x 19mm)	250
10105074	Pencil Hard Tag RF Standard Lock	2.08"L x 0.55"W x 0.74"H (53mm x 14mm x 19mm)	250

Reusable Hard Tags

Head Pin



The Pin tags are compatible with all Checkpoint AM/RF hard tags*

**Our range of pins are compatible with our hard tags. most can be interchanged, please speak to a member of our team for more information or to try the different combinations possible*

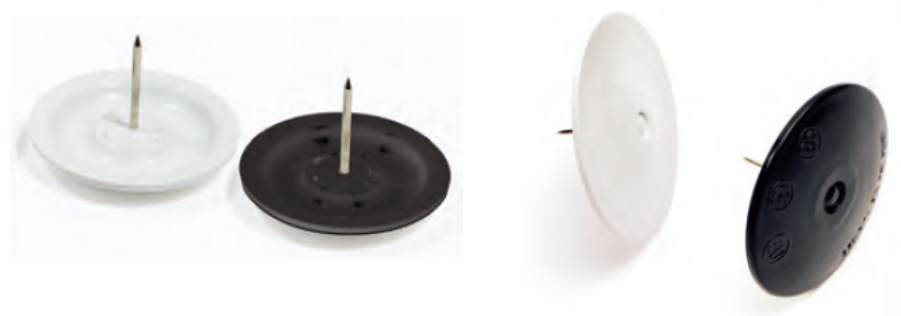
PIN FEATURES:

- Cone head - designed to land on its side minimising potential accidents
- Swivel pin - designed to be difficult to defeat by turning multiple times
- Ink pin - will disperse ink on garment if tampered with dome head pin, designed to fit flush against larger tags to minimise prying
- 1 Alarm



SUGGESTED APPLICATIONS:

Warehouse
Grocery
Garment Store
Apparel



ORDER CODE	DESCRIPTION	EXTERNAL DIM. (L x W) or D	CARTON QTY.
9167504	Conical Head Nichel Pin	0.629"L x 0.05"W (16mm x 1.27mm)	250
9207676	Swivel Head Golden Pins	0.629"L x 0.05"W (16mm x 1.27mm)	250
9137104	Swivel Head Golden Pins	0.748"L x 0.05"W (19mm x 1.27mm)	250
9207605	Swivel Head Golden Pins	0.826"L x 0.05"W (21mm x 1.27mm)	250
9215125	Dome Head Pin	0.708"L x 0.05"W (18mm x 1.27mm)	250
9173909	Conical Head Nichel Pin	0.984"L x 0.05"W (25mm x 1.27mm)	250
10105913	Pin 17mm for Gen2 HT	0.669" D (17mm)	1000
10112051	Gen 3 Ink Tag Pin Blue (with shroud)	1.8" D (46mm)	250
10112017	Gen 3 Ink Tag Pin Red (with shroud)	1.8" D (46mm)	250
10115569	Pin AM	19mm	500
10115566	Pin RF	19mm	250

Reusable Hard Tags

Lanyard

Our range of lanyards come in different lengths and material finish to give you the flexibility to use in conjunction with our hard tags on a range of merchandise.

KEY FEATURES:

- Available in 3" or 6"
- 1 Alarm
- Compatible with Fashion 3 Hard Tag

SUGGESTED APPLICATIONS:

Handbags
Suitcases
Shoes



SAP CODE	DESCRIPTION	EXTERNAL DIM. (L)	CARTON QTY.
9203023	Steel Flex	6.299 inches (16cm)	100
7604784	Lanyard Double Loop White	5.511 inches (14cm)	100
9203041	Steel Flex String	8.267 inches (21cm)	100
10009326	Lanyard 3" Transparent	3 inches (7.62cm)	250
10101406	Lanyard 6" Transparent	6 inches (15.24cm)	250

Keepers®

With more than 70 sizes to choose from, our tough, polycarbonate, benefit denial keepers allow you to create attractive visual displays with confidence knowing your merchandise is well-protected.



Keepers

Product Line



Showcase Keepers®

page 62-63



Collapsible Keepers®

page 64



Deodorant Keepers®

page 65



Health & Beauty Keepers®

page 66-67



Razor Keepers®

page 68



Infant Formula Multi-Use Keepers®

page 69



Standard Lock Keepers®

page 70



2 Alarm Infant Formula Multi-Use Keepers®

page 71



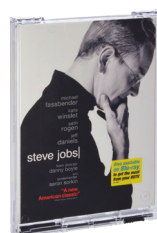
Multi-Use Keepers®

page 72-73



CD Keepers®

page 74



DVD/Blu-ray Keepers®

page 75



Gaming Keepers®

page 76

Keepers

Showcase Keepers®



Rounded edges provide a softer appearance and improved aesthetics

Showcase Keepers are designed to make your fragrance and health & beauty merchandise the star. Softer corners and a stylish pedestal guarantee that merchandise is prominently displayed and highly secure.

KEY FEATURES:

- Available in nine sizes
- Rounded edges
- 1 Alarm
- Tiered pedestal base
- Keeps original package intact
- Easy to use & reuse
- Provides the security of locked cabinets with the benefits of open merchandising

SUGGESTED APPLICATIONS:

Fragrance

Health & beauty

High-end boxed jewelry

SUGGESTED DETACHERS BY LOCKING MECHANISM:

S3 Lock: S3 Handkeys (10006401, 10006402, 10006398, 10006399, 10006347, 9286317, 10006400, 9409394). More info page 79 of the catalogue.



S3HB108

Tiered pedestal base provides a more fashion-forward aesthetic

Clear sides provide excellent viewing of package and product information



S3HB103



ORDER CODE	SAP CODE	DESCRIPTION	INTERNAL DIM. (H x W x D)	EXTERNAL DIM. (H x W x D)	CARTON QTY.
S3HB101ND	9238557	Showcase 101 - AM	5.79"H x 3.06"W x 2.06"D	6.56"H x 3.44"W x 2.55"D	20
S3HB101RF	9238558	Showcase 101 - RF	14.70cmH x 7.77cmW x 5.23cmD	(16.67cmH x 8.74cmW x 6.47cmD)	20
S3HB102RF	9238560	Showcase 102 - RF	7.78"H x 3.06"W x 2.06"D	8.56"H x 3.44"W x 2.55"D	20
			(19.70cmH x 7.77cmW x 5.23cmD)	(21.75cmH x 8.74cmW x 6.47cmD)	

*This product is available only as MTO (make to order).

ORDER CODE	SAP CODE	DESCRIPTION	EXTERNAL DIM. (H x W x D)	EXTERNAL DIM. (H x W x D)	CARTON QTY.
S3HB103ND*	9238631	Showcase 103 - AM	5.04"H x 2.80"W x 2.54"D	5.79"H x 3.24"W x 3.03"D	20
S3HB103RF	9238632	Showcase 103 - RF	(12.79cmH x 7.10cmW x 6.46cmD)	(14.70cmH x 8.23cmW x 7.70cmD)	20
S3HB104ND	9238633	Showcase 104 - AM	6.54"H x 2.80"W x 2.54"D	7.31"H x 3.24"W x 3.03"D	20
S3HB104RF	9238634	Showcase 104 - RF	(16.60cmH x 7.10cmW x 6.46cmD)	(18.58cmH x 8.23cmW x 7.70cmD)	20
S3HB105ND	9238635	Showcase 105 - AM	5.54"H x 3.80"W x 2.80"D	6.31"H x 4.30"W x 3.29"D	20
S3HB105RF	9238636	Showcase 105 - RF	(14.06cmH x 6.60cmW x 7.12cmD)	(16.04cmH x 10.91cmW x 8.36cmD)	20
S3HB106ND	9238637	Showcase 106 - AM	7.28"H x 3.80"W x 2.80"D	8.06"H x 4.30"W x 3.29"D	20
S3HB106RF	9238638	Showcase 106 - RF	(18.50cmH x 9.66cmW x 7.12cmD)	(20.48cmH x 10.91cmW x 8.36cmD)	20
S3HB107ND	9238639	Showcase 107 - AM	5.98"H x 4.79"W x 3.04"D	6.76"H x 5.32"W x 3.52"D	20
S3HB107RF	9238640	Showcase 107 - RF	(15.20cmH x 12.16cmW x 7.71cmD)	(17.18cmH x 13.52cmW x 8.95cmD)	20
S3HB108ND*	9414087	Showcase 108 - AM	5.34"H x 5.35"W x 5.35"D	6.11"H x 6.50"W x 5.82"D	10
S3HB108RF	9414088	Showcase 108 - RF	(13.57cmH x 13.60cmW x 13.60cmD)	(15.52cmH x 16.51cmW x 14.78cmD)	10
S3HB109-AM*	10115402	Showcase 109-AM	4.72"H x 3.62"W x 4.00"D	5.71"H x 4.65"W x 4.41"D	20
S3HB109-RF	10115404	Showcase 109-RF	(12.00cmH x 9.20cmW x 10.10cmD)	(14.50cmH x 11.80cmW x 11.20cmD)	20

*This product is available only as MTO (make to order)



Keepers

Collapsible Keepers®



Our Collapsible Keepers are designed to protect small to medium-sized merchandise with great flexibility. The ability to raise and lower the Keeper optimizes shelf space and solves the need for managing fewer sizes of security devices. The products are protected but provided with the maximum of open display.

KEY FEATURES:

- Available in four sizes
- 1 Alarm
- Integrated Hang Tab
- Provides excellent security with open display of merchandise
- Allows the consumer to interface with the product and promotes browsing
- Re-useable and takes up less storage space

SUGGESTED APPLICATIONS:

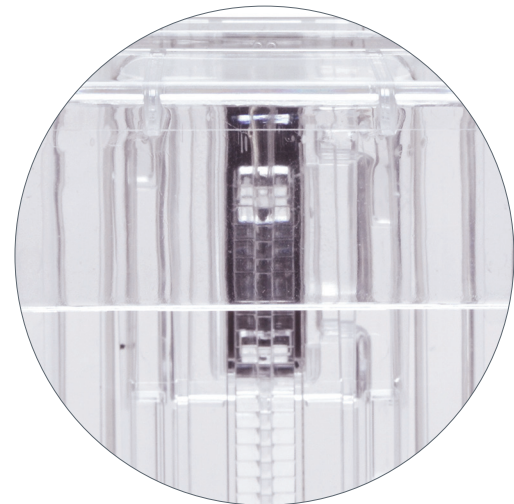
Fragrance

Health & beauty

Small packaged merchandise

SUGGESTED DETACHERS BY LOCKING MECHANISM:

S3 Lock: S3 Handkeys (10006401, 10006402, 10006398, 10006399, 10006347, 9286317, 10006400, 9409394). More info page 79 of the catalogue.



ORDER CODE	SAP CODE	DESCRIPTION	INTERNAL DIM. (H x W x D)	EXTERNAL DIM. (H x W x D)	CARTON QTY.
S3COL101B-AM	10115407	Collapsible 101-AM	5.00-7.64"H x 3.13"W x 2.19"D	5.97-7.95"H x 3.72"W x 2.88"D	20
S3COL101B-RF	10115408	Collapsible 101-RF	(12.70-19.40cmH x 7.96cmW x 5.56cmD)	(15.17-20.20cmH x 9.44cmW x 7.31cmD)	20
S3COL102B-AM	10115510	Collapsible 102-AM	4.25-6.14"H x 2.93"W x 2.70"D	5.22-6.46"H x 3.51"W x 3.39"D	20
S3COL102B-RF	10115521	Collapsible 102-RF	(10.80-15.60cmH x 7.43cmW x 6.86cmD)	(13.27-16.40cmH x 8.91cmW x 8.61cmD)	20
S3COL103B-AM	10115522	Collapsible 103-AM	4.60-7.05"H x 3.99"W x 2.94"D	5.58-7.36"H x 4.57"W x 3.63"D	20
S3COL103B-RF	10115523	Collapsible 103-RF	(11.70-17.90cmH x 10.14cmW x 7.46cmD)	(14.17-18.70cmH x 11.62cmW x 9.21cmD)	20
S3COL104B-AM	10115524	Collapsible 104-AM	2.75-3.65"H x 3.39"W x 3.35"D	3.61-4.29"H x 3.93"W x 3.70"D	20
S3COL104B-RF	10115525	Collapsible 104-RF	(7.00-9.26cmH x 8.61cmW x 8.51cmD)	(9.17-10.90cmH x 9.98cmW x 9.40cmD)	20

NOTE: All the collapsible keepers are available only as MTO (make to order).

Keepers

Deodorant Keepers®

Checkpoint offers the most comprehensive line of Keepers for high theft health & beauty merchandise. Checkpoint Keepers are the optimal choice in open display security with specifically designed options for high shrink items.

KEY FEATURES:

- Bar code readable
- 1 Alarm
- Keeps original package intact
- Easy to use & reuse

SUGGESTED APPLICATIONS:

Deodorant

Health & beauty

Clear sides provide excellent viewing of package and product information



ACM453B

Security of locked cabinets with the benefits of open merchandising



ACM452B

ACM453B

ACM454B

Strong visual deterrent



ORDER CODE	SAP CODE	DESCRIPTION	INTERNAL DIM. (H x W x D)	EXTERNAL DIM. (H x W x D)	CARTON QTY.
ACM452BRF	10110708	Deodorant, Small – RF	4.75"H x 2.00"W x 2.00"D (12.06cmH x 5.08cmW x 5.08cmD)	5.75"H x 2.25"W x 2.25"D (14.61cmH x 5.72cmW x 5.72cmD)	20
ACM453BRF	10110715	Deodorant, Medium–RF	6.25"H x 2.00"W x 2.00"D (15.88cmH x 5.08cmW x 5.08cmD)	7.25"H x 2.25"W x 2.25"D (18.42cmH x 5.72cmW x 5.72cmD)	20
ACM454BRF	10110723	Deodorant, Large – RF	9.25"H x 2.00"W x 2.00"D (23.50cmH x 5.08cmW x 5.08cmD)	10.25"H x 2.25"W x 2.25"D (26.04cmH x 5.72cmW x 5.72cmD)	20
ACM452BRF	9529115	Deodorant, Small – RF w/ AM Label	4.75"H x 2.00"W x 2.00"D (12.06cmH x 5.08cmW x 5.08cmD)	5.75"H x 2.25"W x 2.25"D (14.61cmH x 5.72cmW x 5.72cmD)	20
-	9536573	Deodorant Keeper S3 DT	7.09"H x 1.97"W x 1.97"D (18.00cmH x 5.49cmW x 5.47cmD)	7.87"H x 1.97"W x 1.97"D (20.75cmH x 5.9cmW x 5.9cmD)	20

Keepers

Health & Beauty

Keepers®



Checkpoint offers the most comprehensive line of Keepers for high theft health & beauty merchandise. Keepers are the optimal choice in open display security with specifically designed options for high shrink items including razor blades, family planning and teeth whitening products.

KEY FEATURES:

- Bar code readable
- 1 Alarm
- Keeps original package intact
- Easy to use & reuse
- Hang Tab Compatible

SUGGESTED APPLICATIONS:

Beauty creams
Teeth whitening
Electric toothbrush refills
Razor blades & handles
Fragrance
Family planning
Deodorant

SUGGESTED DETACHERS BY LOCKING MECHANISM:

S3 Lock: S3 Handkeys (10006401, 10006402, 10006398, 10006399, 10006347, 9286317, 10006400, 9409394). More info page 79 of the catalogue.

Clear sides provide excellent viewing of package and product information

Hang Tab Compatible



KP1521



ACM450B

ORDER CODE	SAP CODE	DESCRIPTION	INTERNAL DIM. (H x W x D)	EXTERNAL DIM. (H x W x D)	CARTON QTY.
AVM116BENDL**	10005157	Health & Beauty #3-AM	3.25"H x 2.81"W x 2.81"D	4.10"H x 3.06"W x 3.31"D	20
AVM116BERFL**	9192050	Health & Beauty #3-RF	(8.26cmH x 7.13cmW x 7.13cmD)	(10.41cmH x 7.77cmW x 8.40cmD)	20
AVM126BENDL**	9192057	Health & Beauty #8-AM	4.33"H x 2.83"W x 1.65"D	5.25"H x 3.13"W x 2.18"D	20
AVM126BERFL**	9192059	Health & Beauty #8-RF	(10.99cmH x 7.18cmW x 4.19cmD)	(13.34cmH x 7.95cmW x 5.54cmD)	20
ACM216BENDL**	10005155	Health & Beauty #2-AM	5.38"H x 3.56"W x 2.43"D	6.31"H x 3.87"W x 2.94"D	20
ACM216BERFL**	10005156	Health & Beauty #2-RF	(13.66cmH x 9.04cmW x 6.17cmD)	(16.03cmH x 9.83cmW x 7.47cmD)	20
AVM226BENDL**	9192075	Health & Beauty #7-AM	5.50"H x 2.83"W x 1.96"D	6.43"H x 3.13"W x 2.50"D	20
AVM226BERFL**	9192077	Health & Beauty #7-RF	(13.97cmH x 7.18cmW x 4.97cmD)	(16.33cmH x 7.95cmW x 6.35cmD)	20

ORDER CODE	SAP CODE	DESCRIPTION	INTERNAL DIA. (H x W x D)	EXTERNAL DIM. (H x W x D)	CARTON QTY.
AVM238BND	9292605	OralB 4 or 8 Pack – AM	8.65"H x 2.38"W x 1.36"D	9.00"H x 3.27"W x 1.50"D	50
AVM238BRF	9292606	OralB 4 or 8 Pack – RF	(21.97cmH x 6.05cmW x 3.45cmD)	(22.90cmH x 8.30cmW x 3.81cmD)	50
ACM316BNDL**	10005158	Health & Beauty #4-AM	4.44"H x 3.81"W x 0.98"D	5.18"H x 4.06"W x 1.50"D	20
			(11.27cmH x 9.67cmW x 2.48cmD)	(13.16cmH x 10.31cmW x 3.81cmD)	
ACM326BNDL**	9192044	Small Ink – AM	6.49"H x 3.84"W x 2.03"D	7.36"H x 4.11"W x 2.58"D	24
ACM326BRFL**	9192046	Small Ink – RF	(16.47cmH x 9.75cmW x 5.15cmD)	(18.67cmH x 10.42cmW x 6.54cmD)	24
ACM336BNDL**	10005227	Small Package – AM	4.91"H x 4.92"W x 1.96"D	5.66"H x 5.19"W x 2.42"D	48
ACM336BRFL**	9172900	Small Package – RF	(12.47cmH x 12.50cmW x 4.99cmD)	(14.38cmH x 13.18cmW x 6.15cmD)	48
AVM412BNDL**	9230342	Health & Beauty #10-AM	7.90"H x 5.90"W x 2.37"D	8.75"H x 6.20"W x 2.92"D	20
AVM412BRFL**	9207690	Health & Beauty #10-RF	(20.07cmH x 14.99cmW x 6.02cmD)	(22.23cmH x 15.75cmW x 7.42cmD)	20
ACM416BNDL**	10005152	Health & Beauty #1-AM	7.94"H x 3.93"W x 2.21"D	8.81"H x 4.10"W x 2.81"D	20
ACM416BRFL**	9192091	Health & Beauty #1-RF	(20.17cmH x 9.98cmW x 5.61cmD)	(22.38cmH x 10.41cmW x 7.13cmD)	20
AVM426BNDL**	9192093	Health & Beauty #5-AM	7.87"H x 2.83"W x 2.16"D	8.75"H x 3.13"W x 2.75"D	20
AVM426BRFL**	9192095	Health & Beauty #5-RF	(19.98cmH x 7.18cmW x 5.48cmD)	(22.23cmH x 7.95cmW x 6.99cmD)	20
AVM446BNDL**	9192097	Health & Beauty #6-AM	6.69"H x 2.83"W x 1.37"D	7.56"H x 3.13"W x 1.94"D	20
AVM446BRFL**	9192099	Health & Beauty #6-RF	(16.99cmH x 7.18cmW x 3.47cmD)	(19.20cmH x 7.95cmW x 4.93cmD)	20
ACM450B-AM** *	10115370	Health & Beauty #12-AM	10.50"H x 3.88"W x 3.13"D	11.25"H x 4.08"W x 3.34"D	16
ACM450B-RF**	10115401	Health & Beauty #12-RF	(26.67cmH x 9.86cmW x 7.95cmD)	(28.58cmH x 10.26cmW x 8.48cmD)	16
AVM466BNDL** *	9230344	Health & Beauty #9-AM	9.35"H x 2.84"W x 2.45"D	10.20"H x 3.15"W x 3.02"D	20
AVM466BRFL**	9231601	Health & Beauty #9-RF	(23.75cmH x 7.21cmW x 6.22cmD)	(25.91cmH x 8.00cmW x 7.67cmD)	20

*This product is available only as MTO (make to order)

**Compatible with Hang Tabs BVT125C, BVT125, HTB1425, BVT1255V, KP1506



Locked cabinets with the benefits of open merchandising

Keepers

Razor Keepers®



Hang Tab Compatible

S3 Keepers are part of the broadest and best line of Keepers in the world. The patented magnetic lock is ultra secure, but quick and easy to open. Use Razor Keepers to protect and display today's most popular merchandise.

KEY FEATURES:

- Bar code readable
- 1 Alarm
- Keeps original package intact
- Easy to use & reuse
- Hang Tab Compatible

SUGGESTED APPLICATIONS:

Razor cartridges

Razor handles

Health & Beauty

SUGGESTED DETACHERS BY LOCKING MECHANISM:

S3 Lock: S3 Handkeys (10006401, 10006402, 10006398, 10006399, 10006347, 9286317, 10006400, 9409394). More info page 79 of the catalogue.



Clear sides provide excellent viewing of package and product information

ACM346B



ACM416B

ORDER CODE	SAP CODE	DESCRIPTION	INTERNAL DIM. (H x W x D)	EXTERNAL DIM. (H x W x D)	CARTON QTY.
ACM306BND**	10006045	Razor Blades, AM	4.46"H x 3.80"W x 0.75"D	5.16"H x 4.04"W x 1.20"D	40
ACM306BRF**	9172425	Razor Blades, RF	(11.33cmH x 9.65cmW x 1.91cmD)	(13.11cmH x 10.26cmW x 3.05cmD)	40
ACM346BND**	9233148	Gillette Fusion-AM	4.44"H x 4.17"W x 1.06"D	5.18"H x 4.39"W x 1.56"D	20
ACM346BRF**	10005070	Gillette Fusion-RF	(11.30cmH x 10.60cmW x 2.70cmD)	(13.15cmH x 11.15cmW x 3.95cmD)	20
ACM346BDT-HT	10111922	Gillette Fusion-DT Integrated Hang Tab	4.44"H x 4.17"W x 1.06"D (11.30cmH x 10.60cmW x 2.70cmD)	5.18"H x 4.39"W x 1.56"D (13.15cmH x 11.15cmW x 3.95cmD)	20
ACM356BND**	9233202	Mach3 Razor 12 Pack-AM	4.44"H x 4.17"W x 1.42"D	5.18"H x 4.39"W x 1.91"D	20
ACM356BRF**	9232443	Mach3 Razor 12 Pack-RF	(11.30cmH x 10.60cmW x 3.61cmD)	(13.15cmH x 11.15cmW x 4.85cmD)	20
ACM388BND**	10100920	Razor 12 Pack-AM	4.44"H x 4.22"W x 2.35"D	5.16"H x 4.42"W x 2.67"D	20
ACM388BRF**	10100941	Razor 12 Pack-RF	(11.30cmH x 10.72cmW x 5.97cmD)	(13.11cmH x 11.20cmW x 6.80cmD)	20
ACM386BND**	10009394	1 AL Clamshell Razor AM	-	5.66"H x 4.02"W x 1.29"D	20
ACM386BRF**	10009395	1 AL Clamshell Razor RF	-	(14.40cmH x 10.20cmW x 3.27cmD)	20
ACM390BND**	10100944	Razor Clamshell (12 pack) AM	-	4.02"H x 2.01"W x 5.67"D	20
ACM390BRF**	10100945	Razor Clamshell (12 pack) RF	-	(10.20cmH x 5.1cmW x 14.4cmD)	20

** Compatible with Hang Tabs BVT125C, BVT125, HTB1425, BVT125SV, KP1506

Keepers

Infant Formula Multi-Use Keepers®



This assortment of Keepers allows retailers the convenience of choosing the best fit for their high-theft merchandise. The patented magnetic lock is ultra secure, but quick and easy to open which keeps checkout lines moving smoothly.

KEY FEATURES:

- Bar code readable
- 1 Alarm
- Keeps original package intact
- Easy to use & reuse
- Available in RF or AM

SUGGESTED APPLICATIONS:

Small infant formula cans

Medium infant formula cans

Large infant formula cans

Rectangular infant formula

Coffee canisters

Yankee Candles®



SUGGESTED DETACHERS BY LOCKING MECHANISM:

S3 Lock: S3 Handkeys (10006401, 10006402, 10006398, 10006399, 10006347, 9286317, 10006400, 9409394). More info page 79 of the catalogue.



Provides the security of locked cabinets with the benefits of open merchandising



ORDER CODE	SAP CODE	DESCRIPTION	INTERNAL DIM. (H x Dia.)	EXTERNAL DIM. (H x Dia.)	CARTON QTY.
S3IFNDL*	9261542	Infant Formula, Small, AM	5.02"H x 4.08"Dia.	6.00"H x 4.55"Dia.	12
S3IFRFL*	9261543	Infant Formula, Small, RF	(12.75cmH x 10.38cmDia.)	(15.24cmH x 11.56cmDia.)	12
S3IFSTAM*	10115528	Infant Formula, Small-Medium, AM	5.80"H x 4.08"Dia.	7.25"H x 4.75"Dia.	12
S3IFSTRF	10115529	Infant Formula, Small-Medium, RF	(14.75cmH x 10.38cmDia.)	(18.41cmH x 12.06cmDia.)	12
S3IFMBND*	10006404	Infant Formula, Medium-Large, AM	7.16"H x 5.30"Dia.	8.33"H x 5.80"Dia.	12
S3IFMBRF	10006405	Infant Formula, Medium-Large, RF	(18.19cmH x 13.46cmDia.)	(21.16cmH x 14.73cmDia.)	12

*This product is available only as MTO (make to order).

Keepers

Standard Lock Keepers®



Instruction video

The Standard Lock Keepers are the new line of razor keepers with both an integrated and a flip hang tab minimizing the space on the shelf. Its automatic opening system reduces considerably the labour costs in-store and the queues at check-out thanks to a one-hand removal.

KEY FEATURES:

- 2 sizes for razors: 4/8 pack & 12 pack
- RF, AM or DT technology
- 360° product visibility
- Easy to apply and remove with single hand
- Additional flip hang tag (already fitted on the keeper)
- Integrated hang-tab not adding high to the lineal
- Suitable for any display configuration: on the shelf, on the hook and eurobox display

SUGGESTED APPLICATIONS:

Razors



Standard Lock Keeper - 12 pack version

Additional flip hang tab



SAP CODE	DESCRIPTION	INTERNAL DIM. (H x Diam.)	EXTERNAL DIM. (H x Diam.)	CARTON QTY.
9528494	Standard Lock Keeper 12 pack - RF	11.00cmH x 9.81cmW x 4.52cmD	13.57cmH x 10.18cmW x 5.01cmD	20
9528495	Standard Lock Keeper 4-8 pack - RF	11.00cmH x 9.81cmW x 2.52cmD	13.57cmH x 10.18cmW x 3.27cmD	20

Keepers

2 Alarm Infant Formula Multi-Use Keepers®



The 2 Alarm Infant Formula Multi-Use Keeper offers versatility protecting a wide range of items with a high level of protection. If the keeper is manipulated in store, an additional alarm will be activated unless disarmed and opened by an S3 Detacher. The keeper is quick and easy to open which keeps checkout lines moving smoothly.

KEY FEATURES:

- 2 Alarm technology
- Bar code readable
- Keeps original package intact
- Easy to use & reuse
- Standard lock - S3 Detacher

2 ALARM TECHNOLOGY:

EAS Protection: Activates EAS alarm if a breach occurs

Early Detection: Alarms when merchandise is tampered with in store

SUGGESTED APPLICATIONS:

Medium to Large high value goods

SUGGESTED DETACHERS BY LOCKING MECHANISM:

S3 Lock: S3 Handkeys (10006401, 10006402, 10006398, 10006399, 10006347, 9286317, 10006400, 9409394). More info page 79 of the catalogue.)



Strong visual deterrent



Provides the security of locked cabinets with the benefits of open merchandising



SAP CODE	DESCRIPTION	INTERNAL DIM. (H x Diam.)	EXTERNAL DIM. (H x Diam.)	CARTON QTY.
9519153	2 Alarm Infant Formula, Medium-Large, RF	7.8"H x 5.43"Dia. (19.8cmH x 13.8cmDia.)	8.33"H x 5.80"Dia. (21.16cmH x 14.73cmDia.)	12

Keepers

Multi-Use Keepers®



Hang Tab Compatible

Checkpoint's Keepers offer maximum versatility to display a wide variety of merchandise openly and still control your losses. Our Multi-Use Keepers come in more than 13 sizes and multiple security level options. Whether you need to protect something small, like batteries, or something large, like infant formula, we have a size to fit your needs.

KEY FEATURES:

- Keeps original package intact
- Easy to use & reuse
- Hang Tab Compatible
- 1 Alarm

Clear sides provides excellent viewing of package and product information — bar code readable



SUGGESTED APPLICATIONS:

Batteries

Electronics

Health & beauty

Ink

Headphones

Tablets, Netbooks, etc.

SUGGESTED DETACHERS BY LOCKING MECHANISM:

S3 Lock: S3 Handkeys (10006401, 10006402, 10006398, 10006399, 10006347, 9286317, 10006400, 9409394). More info page 79 of the catalogue.

Strong visual deterrent



KP1495



AVM406B



ACM580B

ORDER CODE	SAP CODE	DESCRIPTION	INTERNAL DIM. (H x W x D)	EXTERNAL DIM. (H x W x D)	CARTON QTY.
AVM106BNDL**	10003837	Battery, AM	2.60"H x 3.80"W x 0.75"D	3.33"H x 4.03"W x 1.22"D	48
AVM106BRFL**	9169211	Battery, RF	(6.60cmH x 9.65cmW x 1.91 cmD)	(8.46cmH x 10.23cmW x 3.10cmD)	48
AVM206BNDL**	9182986	Film, AM	2.69"H x 3.80"W x 1.52"D	3.37"H x 4.02"W x 1.99"D	48
AVM206BRFL**	9169214	Film, RF	(6.68cmH x 9.65cmW x 3.86cmD)	(8.56cmH x 10.21cmW x 5.05cmD)	48
AVM396BND** *	9261423	HP Combo Ink-AM	4.95"H x 4.96"W x 2.66"D	5.65"H x 5.17"W x 3.07"D	20
AVM396BRF** *	9282766	HP Combo Ink-RF	(12.57cmH x 12.60cmW x 6.76cmD)	(14.36cmH x 13.13cmW x 7.80cmD)	20

ORDER CODE	SAP CODE	DESCRIPTION	INTERNAL DIM. (H x W x D)	EXTERNAL DIM. (H x W x D)	CARTON QTY.
AVM406BNDL**	9175266	Multi-Use, AM	7.19"H x 5.05"W x 0.128"D	7.93"H x 5.33"W x 1.80"D	25
AVM406BRFL**	9175267	Multi-Use, RF	(18.26cmH x 12.83cm W x 3.25cmD)	(20.14cm H x 13.54cm W x 4.57cmD)	25
ACM436BNDL**	9179462	Twin Ink, AM	4.96"H x 7.84"W x 1.97"D	5.67"H x 8.07"W x 2.44"D	20
ACM436BRFL** *	9179463	Twin Ink, RF	(12.60cmH x 19.91cmW x 5.00cmD)	(14.40cmH x 20.50cmW x 6.20cmD)	20
ACM580BND	10109130	Multi-Use w/Hang Tab, AM	11.61"H x 4.39"W x 2.20"D	12.75"H x 4.74"W x 2.36"D	12
ACM580BRF	9410874	Multi-Use w/Hang Tab, RF	(29.49cmH x 11.16cmW x 5.60cmD)	(32.38cmH x 12.03cmW x 6.00cmD)	20
AVM680BNDL**	9411276	Multi-Use, AM	5.80"H x 6.79"W x 4.45"D	6.50"H x 7.07"W x 4.75"D	16
AVM680BRF**	9411277	Multi-Use, RF	(14.72cmH x 17.25cmW x 11.31cmD)	(16.52cmH x 17.95cmW x 12.05cmD)	16
AVM685-AM**	10115526	Multi-Use, AM	7.87"H x 5.23"W x 4.65"D	8.97"H x 5.51"W x 5.19"D	12
AVM685-RF**	10115527	Multi-Use, RF	(19.98cmH x 13.28cmW x 11.81cmD)	(22.78cmH x 13.99cmW x 13.18cmD)	12
AVM706BNDL**	9175129	Multi-Use, AM	8.69"H x 5.49"W x 1.48"D	9.42"H x 5.79"W x 2.02"D	25
AVM706BRFL**	9169225	Multi-Use, RF	(22.07cm H x 13.94cm W x 3.76cm D)	(24.28cmH x 14.70cmW x 5.10cmD)	25
AVM776BNDL**	9179472	Multi-Use, AM	6.38"H x 6.50"W x 6.50"D	7.24"H x 6.78"W x 7.00"D	8
AVM776BRFL**	9179473	Multi-Use, RF	(16.21cmH x 16.51cmW x 16.51cmD)	(18.39cmH x 17.22cmW x 17.78cmD)	8
AVM806BNDL**	9175201	Multi-Use, AM	10.25"H x 8.96"W x 2.72"D	11.09"H x 9.35"W x 3.30"D	12
AVM806BRFL**	9172297	Multi-Use, RF	(26.04cmH x 22.76cmW x 6.91cmD)	(28.17cmH x 23.75cmW x 8.38cmD)	12
AVM906BNDL**	10005081	Multi-Use, AM	11.71"H x 9.71"W x 3.09"D	12.60"H x 10.13"W x 3.73"D	8
AVM906BRFL**	9175210	Multi-Use, RF	(29.74cmH x 24.66cmW x 7.85cmD)	(32.00cmH x 25.73cmW x 9.47cmD)	8
AVM966BNDL**	9179499	Multi-Use, AM	10.80"H x 8.90"W x 5.40"D	11.65"H x 9.26"W x 6.00"D	6
AVM966BRFL**	9179500	Multi-Use, RF	(27.43cmH x 22.61cmW x 13.72cmD)	(29.60cmH x 23.52cmW x 15.24cmD)	6
KP1495AM** *	10117960	Multi-Use, AM	6.29"H x 9.71"W x 3.09"D	7.25"H x 10.20"W x 3.65"D	8
KP1495RF**	10117971	Multi-Use, RF	(16.00cmH x 24.66cmW x 7.85cmD)	(18.41cmH x 25.91cmW x 9.27cmD)	8

*This product is available only as MTO (make to order)

**Compatible with Hang Tabs BVT125C, BVT125, HTB1425, BVT125SV, KP1506

Keepers

CD Keepers®



Hang Tab Compatible

S3 CD Keepers are part of the broadest and best line of Keepers in the world. The patented magnetic lock is ultra secure, but quick and easy to open which keeps checkout lines moving smoothly. For single and double CD or video game protection, check out the CD and Double CD Keepers.

KEY FEATURES:

- Bar code readable
- 1 Alarm
- Reusable and easy to use
- Keeps original package intact
- Easy to use & reuse
- Provides the security of locked cabinets with the benefits of open merchandising
- Hang Tab Compatible

SUGGESTED APPLICATIONS:

CDs

Video games

SUGGESTED DETACHERS BY LOCKING MECHANISM:

S3 Lock: S3 Handkeys (10006401, 10006402, 10006398, 10006399, 10006347, 9286317, 10006400, 9409394). More info page 79 of the catalogue.



Clear sides provide excellent viewing of package and product information

ACM202B

Strong visual deterrent



ORDER CODE	SAP CODE	DESCRIPTION	INTERNAL DIM. (H x W x D)	EXTERNAL DIM. (H x W x D)	CARTON QTY.
ACM202BNDL***	9175124	1 Alarm CD Keeper-AM	5.03"H x 5.64"W x 0.50"D	5.93"H x 5.99"W x 0.69"D	100
ACM202BRFL***	9169212	1 Alarm CD Keeper-RF	(12.78cmH x 14.33cmW x 1.27cmD)	(15.06cmH x 15.21cmW x 1.75cmD)	100
ACM222BNDL***	9175125	Double CD Keeper-AM	5.13"H x 5.82"W x 1.11"D	6.00"H x 6.15"W x 1.30"D	50
ACM222BRFL***	9169217	Double CD Keeper-RF	(13.03cmH x 14.78cmW x 2.82cmD)	(15.24cmH x 15.62cmW x 3.30cmD)	50

*** Compatible with Hang Tabs AVH125E & HT1000

Keepers

DVD/Blu-ray Keepers®

Checkpoint offers the broadest and best line of Keepers in the world. The patented magnetic lock is ultra secure, but quick and easy to open which keeps checkout lines moving smoothly. Whether it's today's hottest DVD, an expensive DVD gift set or Blu-ray formatted discs — protect them all with Checkpoint's security solutions.

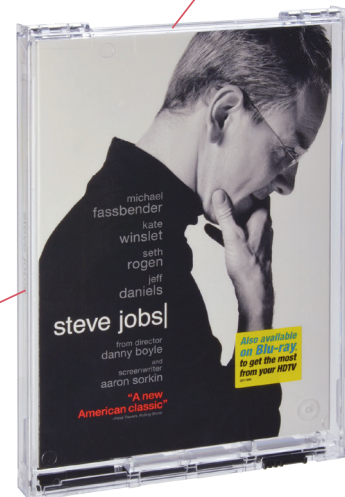
KEY FEATURES:

- Bar code readable
- 1 Alarm
- Keeps original package intact
- Easy to use & reuse
- Hang Tab compatible

Clear sides provide excellent viewing of package and product information

Hang Tab Compatible

Strong visual deterrent



AVM556B

SUGGESTED APPLICATIONS:

DVDs

Blu-rays

Video games

SUGGESTED DETACHERS BY LOCKING MECHANISM:

S3 Lock: S3 Handkeys (10006401, 10006402, 10006398, 10006399, 10006347, 9286317, 10006400, 9409394). More info page 79 of the catalogue.



** Compatible with Hang Tabs BVT125C, BVT125, HTB1425, BVT125SV, KP1506

*** Compatible with Hang Tabs AVH125E & HT1000

**** Compatible with 10109601 FLIP HANG TAB

ORDER CODE	SAP CODE	DESCRIPTION	INTERNAL DIM. (H x W x D)	EXTERNAL DIM. (H x W x D)	CARTON QTY.
AVM476BND-WHT	10107770	Clamshell, Integrated Hang Tab, AM	7.04"H x 5.35"W x 0.61"D	7.64"H x 5.70"W x 0.78"D	72
AVM476BRF-WHT	10107771	Clamshell, Integrated Hang Tab, RF	(17.88cmH x 13.60cmW x 1.56cmD)	(19.40cmH x 14.49cmW x 1.99cmD)	72
AVM555RF	9175205	Gaming/DVD, RF	7.54"H x 5.40"W x 0.62"D	8.80"H x 5.68"W x 1.27"D	72
		Frame	(19.15cmH x 13.72cmW x 1.57cmD)	(22.35cmH x 14.40cmW x 3.23cmD)	72
AVM556BNDL-IHT	10103871	Clamshell, Integrated Hang Tab, AM	7.53"H x 5.58"W x 0.61"D	8.38"H x 5.95"W x 0.80"D	80
AVM556BRFL-IHT	10103867	Clamshell, Integrated Hang Tab, RF	(19.13cmH x 14.17cmW x 1.55cmD)	(21.29cmH x 15.11cmW x 2.03cmD)	80
AVM602BND****	9210671	2 Pack DVD Clamshell, AM	7.70"H x 5.68"W x 1.38"D	8.81"H x 6.12"W x 1.62"D	20
AVM602BRF****	9213660	2 Pack DVD Clamshell, RF	(19.56cmH x 14.43cmW x 3.51cmD)	(22.38cmH x 15.54cmW x 4.11cmD)	20
AVM603BND***	9210673	3 Pack DVD Clamshell, AM	7.70"H x 5.68"W x 1.92"D	8.81"H x 6.12"W x 2.12"D	20
AVM603BRF***	9213691	3 Pack DVD Clamshell, RF	(19.56cmH x 14.43cmW x 4.88cmD)	(22.38cmH x 15.54cmW x 5.38cmD)	20
AVM606BNDL**	9182988	Multi-Pack DVDs, AM	7.87"H x 5.93"W x 3.16"D	8.63"H x 6.10"W x 3.65"D	20
AVM606BRFL**	9294592	Multi-Pack DVDs, RF	(19.99cmH x 15.06cmW x 8.03cmD)	(21.92cmH x 15.49cmW x 9.27cmD)	20

Keepers

Gaming Keepers®



Hang Tab compatible

Checkpoint offers a comprehensive line of video game and console Keepers designed to provide locking protection with great visual display. The patented magnetic lock is ultra secure but quick and easy to open which keeps checkout lines moving smoothly.

KEY FEATURES:

- Easy to use & reuse
- 1 Alarm
- Bar code readable
- Keeps original package intact
- Hang Tab compatible
- Customizable branding plates available

Strong visual deterrent

Clear sides provide excellent viewing of package and product information



AVM227B

SUGGESTED APPLICATIONS:

Video game consoles
Video games
DVDs & Blu-rays
Various electronics

SUGGESTED DETACHERS BY LOCKING MECHANISM:

S3 Lock: S3 Handkeys (10006401, 10006402, 10006398, 10006399, 10006347, 9286317, 10006400, 9409394). More info page 79 of the catalogue.



AVM557B

* This product is available only as MTO (make to order)

** Compatible with Hang Tabs BVT125C, BVT125, HTB1425, BVT125SV, HTBV125CS, KP1506

*** Compatible with Hang Tabs AVH125E & HT1000

ORDER CODE	SAP CODE	DESCRIPTION	INTERNAL DIM. (H x W x D)	EXTERNAL DIM. (H x W x D)	CARTON QTY.
AVM211GBNDL**	9175202	Game Boy, AM	5.79"H x 5.09"W x 1.31"D	6.50"H x 5.35"W x 1.78"D	48
AVM211GBRFL**	9169215	Game Boy, RF	(14.71cmH x 12.93cmW x 3.33cmD)	(16.51cmH x 13.59cmW x 4.55cmD)	48
AVM227BWND***	9291450	Nintendo DS, AM	4.95"H x 5.43"W x 0.83"D	5.68"H x 5.75"W x 0.99"D	50
AVM227BWRFL***	9291501	Nintendo DS, RF	(12.56cmH x 13.78cmW x 2.10cmD)	(14.43cmH x 14.61cmW x 2.50cmD)	50
AVM312GBANDL** *	9175263	Game Boy Advance, AM	6.58"H x 5.32"W x 1.74"D	7.16"H x 5.58"W x 2.22"D	24
AVM312GBARFL**	9175264	Game Boy Advance, RF	(16.71cmH x 13.51cmW x 4.42cmD)	(18.19cmH x 14.17cmW x 5.64cmD)	24
AVM456BNDL*	9196428	Sony PSP/PSVITA/Nintendo Switch, AM	7.03"H x 4.19"W x 0.61"D	7.95"H x 4.48"W x 0.77"D	72
AVM456BRFL*	9196429	Sony PSP/PSVITA/Nintendo Switch, RF	(17.85cmH x 10.64cmW x 1.54cmD)	(20.18cmH x 11.38cmW x 1.96cmD)	72
AVM555BNDL**	9175128	Gaming/DVD, AM	7.54"H x 5.40"W x 0.62"D	8.80"H x 5.68"W x 1.27"D	72
AVM555BRFL**	9172295	Gaming/DVD, RF	(19.15cmH x 13.72cmW x 1.57cmD)	(22.35cmH x 14.40cmW x 3.23cmD)	72
AVM557BND	9413629	Branding, No Plate, AM	8.66"H x 5.49"W x 0.83"D	9.88"H x 5.85"W x 1.06"D	50
AVM557BRF	9414002	Branding, No Plate, RF	(22.00cmH x 13.95cmW x 2.10cmD)	(25.10cmH x 14.86cmW x 2.68cmD)	50

Keepers

Game Controller Keeper®

Alpha's newest Keeper size protects popular electronics with ease. By keeping retailers' planograms in mind, a slit at the top of the Keeper enables it to be hung on a peg hook utilizing the package's integrated hang tab.

KEY FEATURES:

- Magnetic spring lock only opens with Alpha's S3 Key
- AM or RF technology
- Activates EAS alarm systems if not removed at checkout
- Keeps original package intact
- Easy to use & reuse
- Hang Tab compatible

SUGGESTED APPLICATIONS:

Game controllers

Small electronics



ORDER CODE	SAP CODE	DESCRIPTION	INTERNAL DIM. (H x Diam.)	EXTERNAL DIM. (H x Diam.)	CARTON QTY.
KP1528-AM	10147730	Game Controller - AM	7.18"H x 7.125"W x 2.93"D	8.125"H x 7.5"W x 3.5"D	12
KP1528-RF	10147731	Game Controller - RF	(18.23cmH x 18.09cmW x 7.44cmD)	(20.63cmH x 19.05cmW x 8.89cmD)	12

Keepers

Hang Tab Guide for Keepers®

FOR 6-SIDED CLAMSHELL KEEPERS



AVH125E
(closed)
SAP# 9169126
Carton Qty: 48



HT1000
(open)
SAP# 9227734
Carton Qty: 100

FOR 6-SIDED GRAY LID KEEPERS



KP1506
(locking, collapsible,
closed, low)
SAP# 10136082
Carton Qty: 100



KP1425
(locking, closed, low)
SAP# 10111736
Carton Qty: 100



BVT125SV
(locking, swivel)
SAP# 9281457
Carton Qty: 100



HTBV125CS
(closed, low)
SAP# 10005118
Carton Qty: 100



BVT125C
(closed, high)
SAP# 9261465
Carton Qty: 100



BVT125
(open, high)
SAP# 10005121
Carton Qty: 100

KEEPERS WITH INTEGRATED FLIP-UP HANG TAB



AVM556B
AVM602B
AVM603B
Replacement Hang Tab SAP#10109601

KEEPERS WITH INTEGRATED RIGID HANG TAB



AVM476B
Replacement Hang Tab SAP#10109601

Keys

Our Keys are ergonomic, versatile and easy to use, providing you with the perfect detacher solution for any of our products.



Keys

Product Line



S3™ Handkeys

page 81



Multi-Detacher™

page 82



Hard Tag Detachers

page 83



Hyper S3 Key

page 84



Super S3 Key

page 84



S3x Keys

page 85

Keys

S3™ Handkeys

S3 HandKeys offer superior aesthetics, ergonomic improvements and ease of use, with the trusted level of security you have come to expect. Serial numbers provide added security. The S3 HandKeys will open the entire line of S3 products.

KEY FEATURES:

The patented S3 HandKey is available in four configurations:

- **Standard S3 HandKey** is equipped with a 60" coiled lanyard that bolts directly into the POS and provide easy access and manageability
- **S3 HandKey and Dock** comes with a convenient dock that is attached at the POS for storage when not in use
- **S3 Locking Counter Key** has the same specialized magnet array with in an ergonomic handset that fits into a locking cradle for added security
- The **S3 Locking Alarming Counter Key** has a 95 dBA alarm that will signal when the lanyard has been compromised



S3 HandKey and Lanyard (S3HKCL)



S3 HandKey and Dock (S3HSLKD)



S3 Locking Counter Key (S3KEY)



S3 Locking Alarming Counter Key (S3AKEY)

ORDER CODE	SAP CODE	DESCRIPTION	EXTERNAL DIM. (L x W x D)	CARTON QTY.
S3HSLKDND	10006401	S3 HandKey and Key Dock, AM	4.65"L x 0.85"W x 0.50"H	1
S3HSLKDRF	10006402	S3 HandKey and Key Dock, RF	(11.81cmL x 2.16cmW x 1.27cmH)	1
S3HKCLND	10006398	S3 HandKey and 60" Lanyard, AM	4.50"L x 1.00"W x 0.75"H	1
S3HKCLRF	10006399	S3 HandKey and 60" Lanyard, RF	(11.43cmL x 2.15cmW x 1.91cmH)	1
S3KEY	10006347	S3 Locking Counter Key	5.75"L x 1.75"W x 1.75"H	1
S3AKEY	9286317	S3 Locking Alarming Counter Key	(14.61cmL x 4.45cmW x 4.45cmH)	1
S3HKRND	10006400	S3 HandKey w/Belt Retractor, AM	4.50"L x 1.00"W x 0.75"H	1
S3HKRFLRL	9409394	S3 HandKey w/Belt Retractor, RF	(11.43cmL x 2.15cmW x 1.91cmH)	1
AF3303	9283051	Barrel Keys, 2 Pack		2
KIT-BATTERY-SCREWDRIVER	10111909	Battery Replacement Kit: T6 Torx Screwdriver and CR2450 Replacement Battery		1

Keys

Multi-Detacher™



Instruction video

In addition to the ergonomics and the S3 magnet set of the S3™ HandKey, the Multi-Detacher Counter Key also boasts a Standard Lock magnet to widen its versatility. This secure, one-key solution will unlock the entire line of Checkpoint S3 solutions as well as select Standard Lock solutions.

KEY FEATURES:

- Serial number provides added security
- 60" lanyard
- HandKey offers flexibility for personnel on the floor
- S3 magnet
- Standard Lock magnet



ORDER CODE	SAP CODE	DESCRIPTION	EXTERNAL DIM. (L x W x D)	CARTON QTY.
S3MDKEYST	9414839	Multi-Detacher Counter Key Non Alarming	5.75"L x 1.75"W x 1.75"H (14.61 cmL x 4.45 cmW x 4.45 cmH)	1
KY1423*	10111227	Multi-Detacher HandKey w/Belt Retractor	4.47"L x 0.97"W x 0.89"H (12.62 cmL x 2.46 cmW x 2.26 cmH)	1
AF3303	9283051	Barrel Keys, 2 Pack		2

* This product is available only as MTO (make to order).

Keys

Hard Tag Detachers

Checkpoint hard tag detachers offer superior aesthetics, ergonomic improvements and ease of use, with the trusted level of security you have come to expect. The compact design of these detachers maintain a high level of security.

PIN FEATURES:

- Fast one-handing checkout
- Easy to use
- Standard or Super Lock magnet
- Smart design maximising hard tag removal at POS



ORDER CODE	DESCRIPTION	EXTERNAL DIM. (DIAMETER)	CARTON QTY.
10104110	DETACHER SUPERLOCK RND - NICKEL CKP	55mm	1
10114333	ACC. FOR SUPER DETACHER - PLASTIC HOUSIN	75mm	1
9162263	ACC. SUPER DETACHER - PLASTIC COVER 57MM	57mm	1
9162218	ACC. SUPER DETACHER - TUBULAR HAND GRIP	-	1
9162219	ACC. SUPER DETACHER - TUBULAR KEY RING	-	1
10106181	DETACHER-SPRLK-D400	69mmL x 28mmW	1
9509475	Spare Cover Kit for D400 Detacher	-	1
9238056	DETACHER GOLF TAG	-	1
9238054	DETACHER DOUBLE FORCE STANDARD	52mmL x 38mmW	1

Keys

Hyper S3™ Key

The Hyper S3 key unlocks the strongest clutch strength products in the Checkpoint portfolio. It is backwards compatible, able to unlock the entire line of S3, Standard Lock, Super Lock, and Hyper Lock products. The deployable handheld portion is attached to the mounted base with a robust 60" cable to keep the key secure while maintaining its flexibility.

KEY FEATURES:

- Serial number provides added security
- 60" cable lanyard
- Unlocks the entire line of S3, Standard Lock, Super Lock, and Hyper Lock products



Hyper S3 Portable Key (Open)



Hyper S3 Couter Key (Closed)



Barrel Keys for Locking (AF3303)



ORDER CODE	SAP CODE	DESCRIPTION	EXTERNAL DIM. (L x W x D)	CARTON QTY.
HYPERS3KEY-BLK-60IN	10148266	Hyper S3 Key, Black, 60 Inch Lanyard	6.9"L x 2.9"W x 2.1"D (15.24cmL x 5.08cmW x 5.08cmH)	10
AF3303	9283051	Barrel Keys, 2 Pack		1

Keys

Super S3™ Key



Instruction video

This next generation of super detacher, based on our Multi-Detacher ergonomic aesthetic, has been designed for ease of use, providing the perfect detacher solution for any of our products. The Super S3 Key provides both form and function and is the strongest detacher in our portfolio.

KEY FEATURES:

- Ergonomically enhanced for easier handling
- Sturdier design able to better withstand rough retail environment
- Lighter than previous Super XT version due to separate magnet sets being used
- Dual-swivel lanyard to prevent tangling
- 36" or 60" coiled lanyard
- S3, Standard Lock and Super Lock detaching
- Can be locked in either open, when being used, or closed position to prevent un-authorized item removal
- Serial number provides added



Super S3 Counter Key (Closed)



Barrel Keys for Locking (AF3303)



ORDER CODE	SAP CODE	DESCRIPTION	EXTERNAL DIM. (L x W x D)	CARTON QTY.
KY1554-SS3KEY-B-60IN	10144026	Super S3 Key, Black, 60" Lanyard	5.75"L x 2.3"W x 1.65"H (14.6cmL x 6.0cmW x 4.2cmH)	1
KY1554-SS3KEY-B-BELT	10144027	Super S3 Key with Belt Retractor, 36" Lanyard	5.75"L x 2.3"W x 1.65"H (14.6cmL x 6.0cmW x 4.2cmH)	1
AF3303	9283051	Barrel Keys		2

Keys

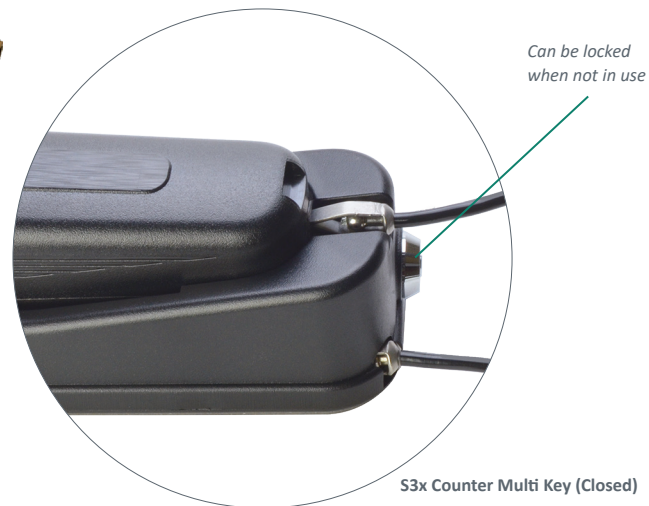
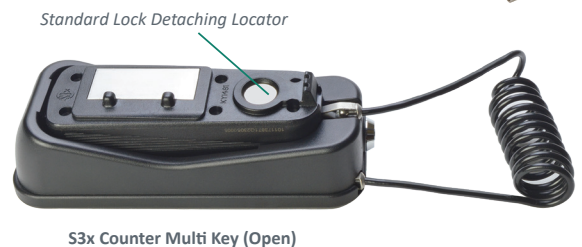
S3x Keys

S3x Keys provide enhanced locking security when used with S3vx devices. S3x Keys open the following devices:

- S3vx AVM606 Keeper
- S3vx AVM806 Keeper
- S3vx AVM966 Keeper
- S3vx 2 Alarm Attack Spider Wrap®
- S3vx 2 Alarm Mini Spider Wrap®
- S3vx 2 Alarm Mini CableLok®

KEY FEATURES:

- Key is backwards compatible and will open existing S3 devices
- Standard Lock magnet on S3x Multi-Key widens versatility
- Can be locked when not in use
- Serial number provides added security



ORDER CODE	SAP CODE	DESCRIPTION	EXTERNAL DIM. (L x W x D)	CARTON QTY.
KY1481S3XCNTR	10117387	S3x Counter Key	6.25"L x 2.43"W x 1.65"H (16.0cmL x 6.2cmW x 4.2cmH)	1
KY1481S3XPORT	10117388	S3x Portable Key w/Recoiler	4.70"L x 1.57"W x 1.07"H (12.0cmL x 4.0cmW x 2.7cmH)	1
KY1481S3XMULTI	10117389	S3x Counter Multi-Key	6.25"L x 2.43"W x 1.65"H (16.0cmL x 6.2cmW x 4.2cmH)	1
KY1481S3XPORTMULTI	10117983	S3x Portable Multi-Key w/Recoiler	4.70"L x 1.57"W x 1.07"H (12.0cmL x 4.0cmW x 2.7cmH)	1
AF3303	9283051	Barrel Keys, 2 Pack		2

NOTE: All these products are available only as MTO (make to order)

Single Use

Designed to be removed by the consumer after purchase, Checkpoint's Single Use solutions offer an economical, practical and secure approach to protecting your merchandise from theft and wardrobing.



Single Use

Shark Tag®



Shark Tag is very effective in preventing customers from purchasing, using and returning merchandise for a full refund.

The right red Shark Tag attaches to the garment in a visible area — signifying that the merchandise is being secured. Shark Tags are easily removed by the customer at home.

KEY FEATURES:

- Assures the garment is in a new and unused condition when returned
- Easy, at home removal
- 1 Alarm
- Can be used to reinforce your store return policy
- Can be source-applied or applied in the store

SUGGESTED APPLICATIONS:

Dresses

Special occasion wear

Menswear

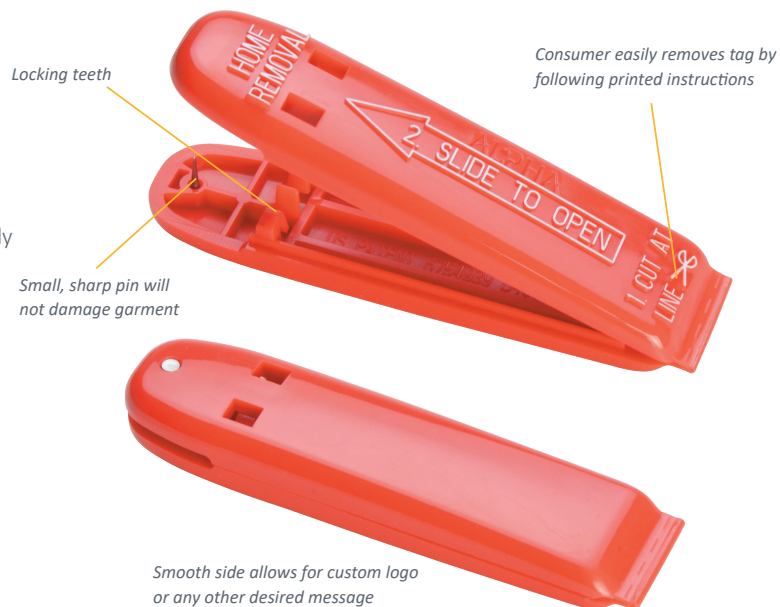
Lingerie

Coats

Furs

Swimwear

Online and catalog orders



Optional printed tag can be customized

Strong visual deterrent



The tag cannot be re-applied to garment without evidence of tampering

ORDER CODE	SAP CODE	DESCRIPTION	EXTERNAL DIM. (L x W x D)	CARTON QTY.
ST150	10033874	Red Shark Tag - No EAS	1.57"L x 0.79"W x 1.18"D (4.00 cm L x 2.00 cm W x 3.00 cm D)	500

Single Use

R-Turn Tag w/ Warning Label



Instruction video

Fight back against **wardrobing**! The new R-Turn Tag w/ Warning Label is very effective in preventing customers from purchasing, using and **returning merchandise for a full refund**. When you wear it, you own it!

The R-Turn Tag w/Warning Label offers a smart, simple and small aesthetic. **No tool is needed** and the customer is **never in contact with the pin**. This tag can be applied anywhere on the item.

Checkpoint R-Turn Tag w/Warning Label enables a vertical application. This **avoids snagging and marking** the fabric during application and removal.

KEY FEATURES:

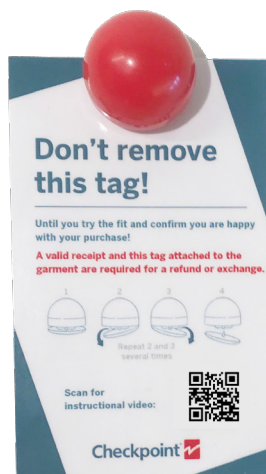
- Easy At Home removal
- No EAS
- Assures a new and unused garment when returned
- Can be used to reinforce your store return policy
- Can be source-applied or applied in the store
- Possibility to personalise the R-Turn Tag

SUGGESTED APPLICATIONS:

Dresses
Special occasion wear
Menswear
Lingerie
Swimwear
Online and catalog orders



Possibility to personalise the R-Turn Tag



SAP CODE	DESCRIPTION	EXTERNAL DIM. R-TURN TAG (D x H)	EXTERNAL DIM. LABEL (L x W)	WEIGHT	CARTON QTY.
9523820	R-Turn Tag, w/Warning Label, English	23.5mm x 19.5mm	95mm x 55mm	4	500
9526378	R-Turn Tag, w/Warning Label, Spanish	23.5mm x 19.5mm	95mm x 55mm	4	500
9526379	R-Turn Tag, w/Warning Label, Italian	23.5mm x 19.5mm	95mm x 55mm	4	500
9526400	R-Turn Tag, w/Warning Label, French	23.5mm x 19.5mm	95mm x 55mm	4	500
9526401	R-Turn Tag, w/Warning Label, Finnish	23.5mm x 19.5mm	95mm x 55mm	4	500
9526402	R-Turn Tag, w/Warning Label, German	23.5mm x 19.5mm	95mm x 55mm	4	500
9526403	R-Turn Tag, w/Warning Label, Polish	23.5mm x 19.5mm	95mm x 55mm	4	500
9526404	R-Turn Tag, w/Warning Label, Lithuan	23.5mm x 19.5mm	95mm x 55mm	4	500

Spider Wraps®

Our Spider Wraps have become the standard in high theft security and are trusted by more than 500 retailers worldwide. Their expandable cables are able to protect a wide range of medium to large-sized merchandise.



Spider Wraps

Product Line



1 Alarm® Spider Wrap®
page 91



2 Alarm® Mini Spider Wrap®
page 92



2 Alarm® Attack Spider Wrap®
page 93



2 Alarm® XL Spider Wrap
page 94



3 Alarm® Attack Spider Wrap®
page 95



Alarming Wrap Tag
page 96



Spider Web
page 97

Spider Wraps

1 Alarm Spider Wrap®



Spider Wraps have become a standard in high-theft security because their expandable cables are able to protect a wide range of merchandise. Alpha was the first to bring the concept of a security wrap to the market and continues to be trusted by over 500 retailers worldwide.

KEY FEATURES:

- 7-strand aircraft grade cable
- 1 alarm
- Easy to apply and remove
- Tough, secure and reusable
- The two-stage locking buckle assures a tight, secure fit.

SUGGESTED APPLICATIONS:

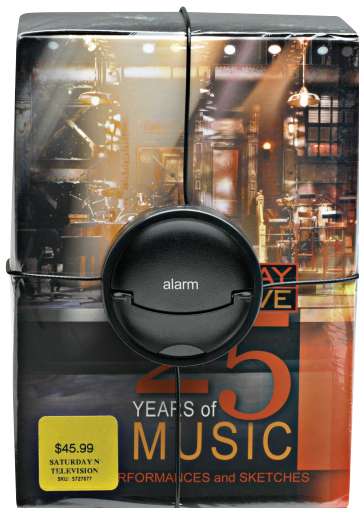
Medium to large packaged goods

SUGGESTED DETACHERS BY LOCKING MECHANISM:

S3 Lock: S3 Handkeys (10006401, 10006402, 10006398, 10006399, 10006347, 9286317, 10006400, 9409394). More info page 79 of the catalogue.



Allows maximum viewing of product graphics



ORDER CODE	SAP CODE	DESCRIPTION	CARTON QTY.
SWRAP2ND*	10007524	1 Alarm Spider Wrap - 50" AM (127.00 cm)	25

* This product is available only as MTO (make to order).

Spider Wraps

2 Alarm Mini Spider Wrap®



The Mini Spider's unique size maximizes display opportunities for small packaged goods. The strong internal clutch mechanism enables the cables to be cinched tightly, providing increased security for your smaller boxed merchandise.

KEY FEATURES:

- Reusable, one-piece design
- Aircraft grade cable
- 2 alarm
- 95 dBA alarm
- Easy to apply and remove
- S3vx version provides added security with verification code

SUGGESTED APPLICATIONS:

Housewares
Coffee makers
Portable DVD players
iPods
Digital photo frames
Mobile phones
Video game hardware
Software
Zip drives
Video games
Ink and toner cartridges

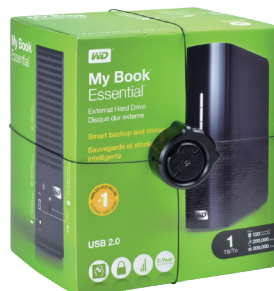


S3vx 2 Alarm Mini Spider Wrap

Includes Lithium battery for years of hassle-free operation

SUGGESTED DETACHERS BY LOCKING MECHANISM:

S3 Lock: S3 Handkeys (10006401, 10006402, 10006398, 10006399, 10006347, 9286317, 10006400, 9409394). More info page 79 of the catalogue.



ORDER CODE	SAP CODE	DESCRIPTION	CARTON QTY.
2ALMNSWRPLND	10109994	2 Alarm Mini Spider Wrap - 32" AM (81.28 cm)	25
2ALMNSWRPLRF	10109995	2 Alarm Mini Spider Wrap - 32" RF (81.28 cm)	25

Spider Wraps

2 Alarm Attack Spider Wrap®

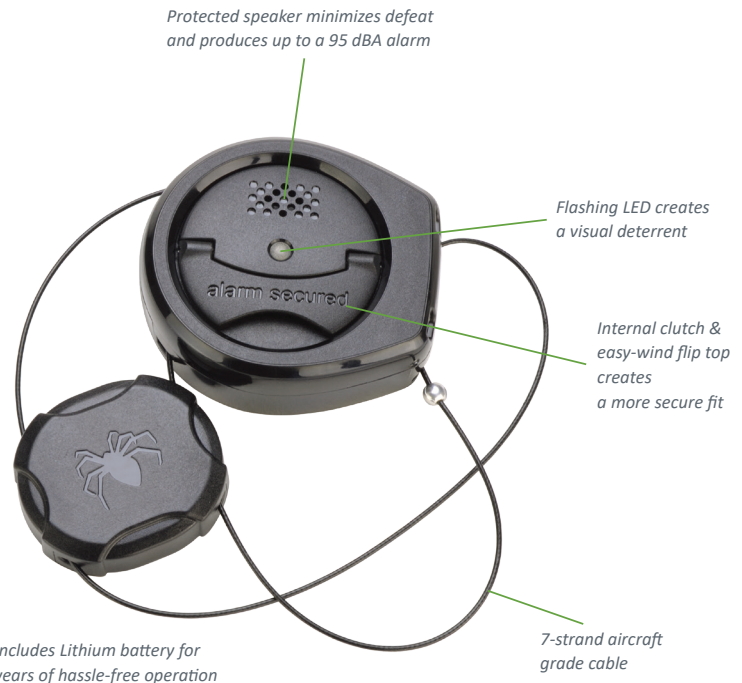


Instruction video

Alpha, the first to bring the concept of a security wrap to market, continues to enhance the Spider Wrap® with features that provide greater ease of use and improved security. A new, strong internal clutch enables cables to be cinched tightly around merchandise providing increased security for your boxed merchandise.

KEY FEATURES:

- Reusable, one-piece design
- 70" or 102" 7-strand aircraft grade cable
- 95 dBA alarm
- 2 alarm
- Flashing LED creates a visual deterrent
- Includes Lithium battery for years of hassle-free operation
- Easy to apply and remove
- S3vx version provides added security with verification code



SUGGESTED APPLICATIONS:

Medium to large packaged goods

SUGGESTED DETACHERS BY LOCKING MECHANISM:

S3 Lock: S3 Handkeys (10006401, 10006402, 10006398, 10006399, 10006347, 9286317, 10006400, 9409394). More info page 79 of the catalogue.



S3vx 2 Alarm Attack Spider Wrap

Auto-lock feature reduces number of steps required to apply



ORDER CODE	SAP CODE	DESCRIPTION	CARTON QTY.
SP1310S3AM70	10115320	2 Alarm Attack Spider Wrap - 70" AM (177.80 cm)	25
SP1310S3RF70	10115321	2 Alarm Attack Spider Wrap - 70" RF (177.80 cm)	25
SP1310S3DT102	10135392	2 Alarm Attack Spider Wrap - 102" Dual Technology (259.08 cm)	25

Spider Wraps

2 Alarm XL Spider Wrap®



The XL Spider's unique size maximizes display opportunities for large packaged goods. The strong internal clutch mechanism enables the cables to be cinched tightly, providing increased security for your boxed merchandise.

KEY FEATURES:

- Reusable, one-piece design
- 132" aircraft grade cable
- 95 dBA alarm
- 2 alarm
- Easy to apply and remove

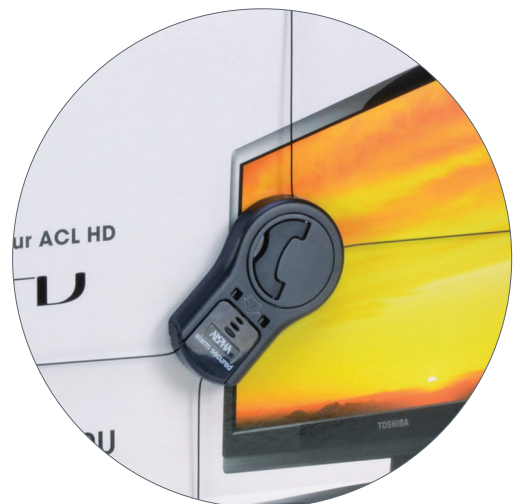
SUGGESTED APPLICATIONS:

Flat screen TVs

Large boxed merchandise

SUGGESTED DETACHERS BY LOCKING MECHANISM:

S3 Lock: S3 Handkeys (10006401, 10006402, 10006398, 10006399, 10006347, 9286317, 10006400, 9409394). More info page 79 of the catalogue.



ORDER CODE	SAP CODE	DESCRIPTION	CARTON QTY.
SP1392AM	10115322	2 Alarm XL Spider Wrap - 132" AM (335.28 cm)	25
SP1392RF	10115323	2 Alarm XL Spider Wrap - 132" RF (335.28 cm)	25

Spider Wraps

3 Alarm Attack Spider Wrap®

Alpha, the first to bring the concept of a security wrap to market, continues to enhance the Spider Wrap® with features that provide greater ease of use and improved security. A new, strong internal clutch enables cables to be cinched tightly around merchandise providing increased security for your boxed merchandise.

KEY FEATURES:

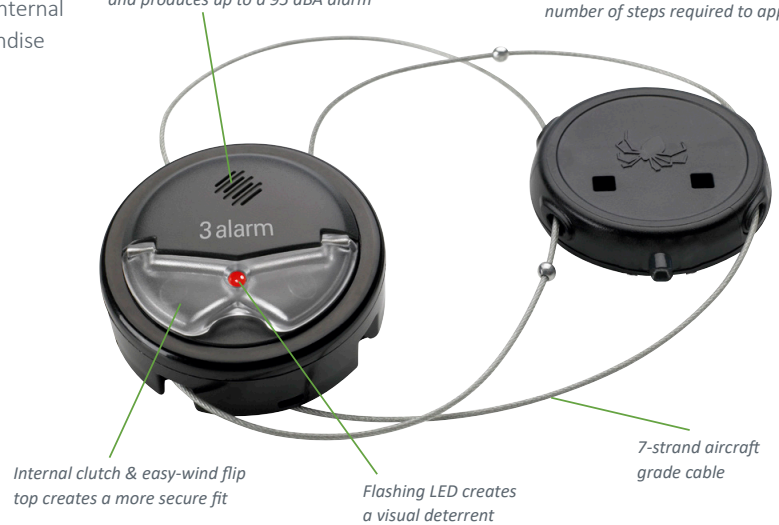
- Reusable, one-piece design
- 7-strand aircraft grade cable
- 95 dBA alarm
- 3 alarm
- Easy to apply and remove
- The two-stage locking buckle assures a tight, secure fit

SUGGESTED APPLICATIONS:

Medium to large packaged goods

Protected speaker minimizes defeat and produces up to a 95 dBA alarm

Auto-lock feature reduces number of steps required to apply



3 ALARM TECHNOLOGY:

EAS Protection: Activates EAS alarm if a breach occurs

Early Detection: Alarms when merchandise is tampered with in store

Extended Range: Self alarms if merchandise is removed from store

Includes Lithium battery for years of hassle-free operation

SUGGESTED DETACHERS BY LOCKING MECHANISM:

S3 Lock: S3 Handkeys (10006401, 10006402, 10006398, 10006399, 10006347, 9286317, 10006400, 9409394). More info page 79 of the catalogue.



ORDER CODE	SAP CODE	DESCRIPTION	CARTON QTY.
3ALQSWRPLND	10003509	3 Alarm Attack Spider Wrap - 70" AM (177.80 cm)	25
3ALQSWRPLRFC	10003566	3 Alarm Attack Spider Wrap - 70" RF (177.80 cm)	25
3ALQSWRPXLND*	10003507	3 Alarm Attack Spider Wrap - 102" AM (259.08 cm)	25
3ALQSWRPXLRFC*	10003568	3 Alarm Attack Spider Wrap - 102" RF (259.08 cm)	25

* This product is available only as MTO (make to order).

Spider Wraps

2 Alarm Wrap Tag

Spider Wraps have become a standard in high-theft security because their expandable cables are able to protect a wide range of merchandise. Alpha was the first to bring the concept of a security wrap to the market and continues to be trusted by over 500 retailers worldwide.

KEY FEATURES:

- 2 Alarm technology
- 95 dBA alarm
- Adjustable cables cinch to secure a wide array of merchandise
- Rubber grip backing protects the merchandise while ensuring a tight fit omes in small, large, extra large and tall sizes
- Tough, secure and reusable

SUGGESTED APPLICATIONS:

Bottles
Rods & reels
Golf clubs
Drill bits

SUGGESTED DETACHERS BY LOCKING MECHANISM:

S3 Lock: S3 Handkeys (10006401, 10006402, 10006398, 10006399, 10006347, 9286317, 10006400, 9409394). More info page 79 of the catalogue.



ORDER CODE	SAP CODE	DESCRIPTION	EXTERNAL DIM. (L x W x H)	CARTON QTY.
2ALWRAPTAGND*	10117160	2 Alarm Wrap Tag 14" (36cm) - AM	2.69"L x 0.87"W x 1.57"H	25
2ALWRAPTAGRF	10117282	2 Alarm Wrap Tag 14" (36cm) - RF	(6.83 cmL x 2.21 cmW x 3.99 cmH)	25

* This product is available only as MTO (make to order).

Spider Wraps

Spider Web™



The Spider Web's unique multi-strand steel cable mesh bag presents an excellent visual deterrent that allows open merchandising without the risk. Spider Webs provide breakthrough security for even the most irregular-shaped packages.

KEY FEATURES:

- Thin, sleek design
- Easy to apply and remove
- Tough, secure and reusable
- 1 Alarm

SUGGESTED APPLICATIONS:

15" Spider Web: Fits packages with girth up to 21.25"

17" Spider Web: Fits packages with girth up to 23.25"

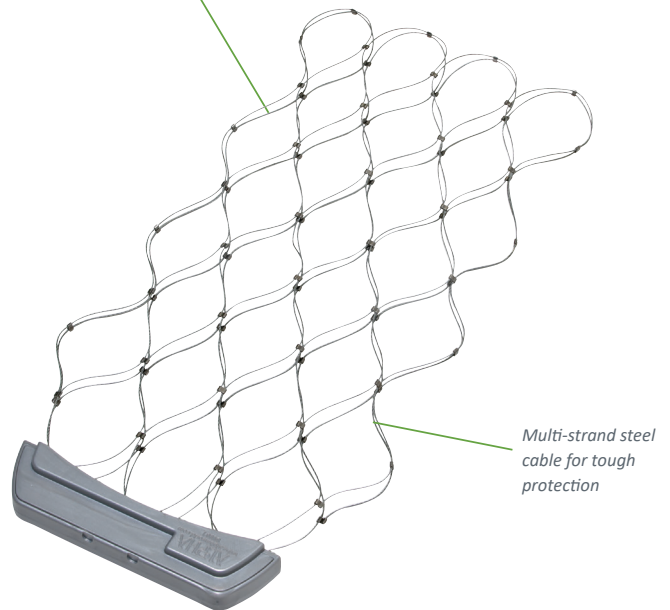
Girth = L+W+D

SUGGESTED DETACHERS BY LOCKING MECHANISM:

S3 Lock: S3 Handkeys (10006401, 10006402, 10006398, 10006399, 10006347, 9286317, 10006400, 9409394). More info page 79 of the catalogue.

Mesh bag expands easily to package size

Protects hard-to-secure clamshell merchandise



Multi-strand steel cable for tough protection



ORDER CODE	SAP CODE	DESCRIPTION	INTERNAL DIM. (L x W x H)	CARTON QTY.
SW17ND	9219286	Spider Web 17" - AM	17.00"H x 7.00"W x 3.00"D	100*
SW17RF	9219287	Spider Web 17" - RF	(43.18 cmH x 17.78 cmW x 7.62 cmD)	100*

* Possibility to order a 10 units package (MOQ)

S3vx

Checkpoint has designed the next level of security solutions to combat the use of illegal detachers.



A Stronger Detacher. A unique code. Your Key To A Security Advantage.

The use of counterfeit, stolen or illegally acquired detachers is on the rise and they are being used to defeat “on-product” solutions leaving some retailers with the desire to have even stronger security. Checkpoint has designed a solution to the problem, giving you two innovative ways to enhance your security and take it to a whole new level with **S3x and S3vx**.



With the new S3vx Detacher, the “x” stands for an extra-strength magnet that gives it greater mechanical integrity. They also have the ability to be programmed with a unique, store-specific code. That’s where the “v” comes in – the advanced encryption technology means the S3vx Detacher sends the “verification” code to the S3vx device to disarm the alarm, during which time the device can then be opened with the extra-strength S3x magnet. If the device is opened without first being disarmed by the verification code, the device will alarm for five minutes or until it receives a valid verification code.

BENEFITS OF S3VX:

- S3vx devices will alarm unless disarmed and opened by the S3vx Detacher that has the same unique code.
- If stolen, the S3vx verification code will be erased automatically to prevent use anywhere else.
- In the case of a store closing or network breach, the S3vx Detachers and S3vx devices can be reprogrammed with a new code.
- Once programmed, the Detacher will retain the verification code unless the cord is cut or the detacher docking station is removed from the POS.
- A stolen S3vx Detacher used to open an S3vx device in another store will result in an alarm.

The S3vx Detacher is backwards compatible and able to open any current S3 solutions the retailer might have.

Checkpoint has the most innovative range of detachers and security devices to alleviate your shrink problems and increase your profits. To find out more about S3vx, please check our website.



S3vx Devices Available:
Spider Wraps® · Keepers®
CableLoks®

S3vx

S3vx Mini CableLok®



KEY FEATURES:

- 7x7 strand, non-tangle aircraft grade cable provides coverage to a wide array of medium to large packaged goods
- 95 dBA alarm provides a powerful warning in the event of tampering or theft
- 2 Alarm
- Flashing LED light creates both a strong visual deterrent and indicates active battery
- Isolated sound chamber provides added protection against tampering



SUGGESTED APPLICATIONS: Handbags, shoes

SUGGESTED DETACHERS BY LOCKING MECHANISM: 10117387, 10117388, 10117389, 10117983

ORDER CODE	SAP CODE	DESCRIPTION	EXTERNAL DIM. (H x W x D)	CARTON QTY.
CL1456VX2ALAM4*	10112525	S3vx 2 Alarm Mini CableLok AM - 3.5" Lanyard (9.10cm)	Housing - 1.42"H x 1.89"W x 0.95"D	25
CL1456VX2ALRF4*	10112523	S3vx 2 Alarm Mini CableLok RF - 3.5" Lanyard (9.10cm)	Housing - 1.42"H x 1.89"W x 0.95"D	25
CL1456VX2ALAM6*	10112479	S3vx 2 Alarm Mini CableLok AM - 6" Lanyard (15.24cm)	Housing - 1.42"H x 1.89"W x 0.95"D	25
CL1456VX2ALRF6*	10112478	S3vx 2 Alarm Mini CableLok RF - 6" Lanyard (15.24cm)	Housing - 1.42"H x 1.89"W x 0.95"D	25

S3vx Keepers®



KEY FEATURES:

- Keeps original package intact
- 95 dBA alarm provides a powerful warning in the event of tampering or theft
- 2 Alarm
- Flashing LED light creates both a strong visual deterrent and indicates active battery
- Isolated sound chamber provides added protection against tampering
- Hang Tab compatible



SUGGESTED DETACHERS BY LOCKING MECHANISM: 10117387, 10117388, 10117389, 10117983

ORDER CODE	SAP CODE	DESCRIPTION	INTERNAL DIA. (H x W x D)	EXTERNAL DIM. (H x W x D)	CARTON QTY.
AVM806BNDL-S3VX2AL**	10115537	S3VX 2 Alarm Multi-Use, AM	10.25"H x 8.96"W x 2.72"D	11.09"H x 9.35"W x 3.30"D	12
AM806BRFL-S3VX2AL**	10115551	S3VX 2 Alarm Multi-Use, RF	(26.04cmH x 22.76cmW x 6.91cmD)	(28.17cmH x 23.75cmW x 8.38cmD)	12
AVM966BNDL-S3VX2AL**	10115553	S3VX 2 Alarm Multi-Use, AM	10.80"H x 8.90"W x 5.40"D	11.65"H x 9.26"W x 6.00"D	6
AVM966BRFL-S3VX2AL**	10115554	S3VX 2 Alarm Multi-Use, RF	(27.43cmH x 22.61cmW x 13.72cmD)	(29.60cmH x 23.52cmW x 15.24cmD)	6
AVM606BNDL-S3VX2AL**	10115552	S3VX 2 Alarm, AM	7.87"H x 5.93"W x 3.16"D	8.63"H x 6.10"W x 3.65"D	20
AVM606BRFL-S3VX2AL**	10115555	S3VX 2 Alarm, RF	(19.99cmH x 15.06cmW x 8.03cmD)	(21.92cmH x 15.49cmW x 9.27cmD)	20

NOTE: All S3vx products are available only as MTO (make to order)

** Compatible with Hang Tabs BVT125C, BVT125, HTB1425, BVT125SV, KP1506

S3vx

S3vx Mini Spider Wrap®



KEY FEATURES:

- 7x7 strand, non-tangle aircraft grade cable provides coverage to a wide array of small to medium packaged goods
- 95 dBA alarm provides a powerful warning in the event of tampering or theft
- 2 Alarm
- Flashing LED light creates both a strong visual deterrent and indicates active battery
- Isolated sound chamber provides added protection against tampering
- Flip-up winder makes application quick and easy



SUGGESTED APPLICATIONS: Small to medium packaged goods

SUGGESTED DETACHERS BY LOCKING MECHANISM: 10117387, 10117388, 10117389, 10117983

ORDER CODE	SAP CODE	DIMENSIONS	CARTON QTY.
SP1411VX2ALAM*	10117815	S3vx 2 Alarm Mini Spider Wrap - 32" AM (81.28 cm)	25
SP1411VX2ALRF*	10117816	S3vx 2 Alarm Mini Spider Wrap - 32" RF (81.28 cm)	25

S3vx Spider Wrap®



KEY FEATURES:

- 7x7 strand, non-tangle aircraft grade cable provides coverage to a wide array of medium to large packaged goods
- 95 dBA alarm provides a powerful warning in the event of tampering or theft
- Flashing LED light creates both a strong visual deterrent and indicates active battery
- Isolated sound chamber
- Flip-up winder makes application quick and easy
- 2 Alarm



SUGGESTED APPLICATIONS: Medium to large packaged goods

SUGGESTED DETACHERS BY LOCKING MECHANISM: 10117387, 10117388, 10117389, 10117983

ORDER CODE	SAP CODE	DESCRIPTION	CARTON QTY.
SP1410VX2ALAM70	10117821	S3vx 2 Alarm Attack Spider Wrap - 70" AM (177.80 cm)	25
SP1410VX2ALRF70	10117822	S3vx 2 Alarm Attack Spider Wrap - 70" RF (177.80 cm)	25
SP1410VX2ALAM102	10118221	S3vx 2 Alarm Attack Spider Wrap - 102" AM (259.08 cm)	25
SP1410VX2ALRF102	10118222	S3vx 2 Alarm Attack Spider Wrap - 102" RF (259.08 cm)	25

NOTE: All S3vx products are available only as MTO (make to order)

S3vx

S3vx Keys

S3vx Keys and S3vx security devices are programmed with a unique, store-specific code. Once programmed, attempts to open S3vx devices with anything other than Checkpoint's proprietary S3vx Key will result in an alarm. S3vx devices are programmed to "erase" the store code if the S3vx Key is stolen.

S3vx Keys open the following devices:

- S3vx AVM606 Keeper
- S3vx AVM806 Keeper
- S3vx AVM966 Keeper
- S3vx 2 Alarm Attack Spider Wrap®
- S3vx 2 Alarm Mini Spider Wrap
- S3vx 2 Alarm Mini CableLok®

KEY FEATURES:

- Key is backwards compatible and will open existing S3 devices
- Can be locked when not in use
- Serial number provides added security



User Key



Manager Key (one per store)



Barrel Keys for Locking (AF3303)



S3vx Counter Key (Closed & Locked)



S3vx Portable Key

Detaching Locators



ORDER CODE	SAP CODE	DESCRIPTION	EXTERNAL DIM. (H x W x D)	CARTON QTY.
KY1482S3VXICNTR	10119723	S3vx Counter Key	7.80"L x 2.59"W x 2.12"H (19.8cmL x 6.5cmW x 5.4cmH)	1
KY1482S3VXIPOINT	10119724	S3vx Portable Key w/Recoiler	5.98"L x 1.77"W x 1.61"H (15.2cmL x 4.5cmW x 4.1cmH)	1
KY1440MGR	10112633	S3vx Manager Key (Red) - One needed for each store		1
KY1440USR	10112634	S3vx User Key (White)		1
AF3303	9283051	Barrel Keys, 2 Pack		2

NOTE: All S3vx products are available only as MTO (make to order)

RFID

Radio-frequency identification (RFID) uses electromagnetic fields to automatically identify and track tags attached to objects. The tags contain electronically-stored information.



Product Line



G5 RFID Hard Tag
page 105



G6 RFID Hard Tag
page 106



Gen 7 Hard Tag @
Source Dual Tech
page 107



Gen 7 Mini RFID HT
page 108



2 Alarm®
CableLok® RFID
page 109



2 Alarm® Mini Spider Wrap®
page 110



Optical Tag RFID
page 111



2 Alarm®
Attack Spider Wrap®
page 112



Crystal Guard RF/RFID
page 113

G5 RFID Hard Tag

Checkpoint's G5 RFID Hard Tag provides an anti-theft solution and technology for inventory control of high-risk items. It will meet your security needs—including "RFID as EAS." Applied at source, it will help make supply chain data more precise. The G5 RFID Hard Tag is quickly and easily removed at POS for re-use.

KEY FEATURES:

- High performance and reliability for high-risk apparel tagging
- 1 Alarm
- Supports "RFID as EAS" for wide store door configurations
- Enhances accuracy and visibility throughout the supply chain (when applied at source)
- Works easily with magnetic detacher
- Difficult to defeat with common tools; retains its effectiveness even after repeated use

SUGGESTED APPLICATIONS:

Apparel merchandise

SUGGESTED DETACHERS BY LOCKING MECHANISM:

Standard Lock (9414839, 10111227, 9238054). More info page 80 and 81 of the catalogue.

Super Lock (10144026, 10144027, 10104110, 10106181). More info page 81 and 82 of the catalogue.

Quickly and easily removed at POS for re-use



High performance and reliability for high-risk apparel tagging

Improves inventory control



SAP CODE	DESCRIPTION	EXTERNAL DIM. (L x W x D)	CARTON QTY.
10110086	G5 Hard Tag, Beige with Large Pin	2.57" H x 1.13" L x 0.3" D (65.1mm x 28.4 mm x 0.8mm)	1000
10109935	G5 Hard Tag, Black with Small Pin	2.57" H x 1.13" L x 0.3" D (65.1mm x 28.4 mm x 0.8mm)	1000
10110539	G5 Hard Tag, Beige with Small Pin	2.57" H x 1.13" L x 0.3" D (65.1mm x 28.4 mm x 0.8mm)	1000
10115298	G5 Hard Tag, Grey with RF Pin	2.57" H x 1.13" L x 0.3" D (65.1mm x 28.4 mm x 0.8mm)	1000
10115299	G5 Hard Tag, Grey with AM Pin	2.57" H x 1.13" L x 0.3" D (65.1mm x 28.4 mm x 0.8mm)	1000

G6 RFID Hard Tag

Checkpoint's G6 RFID Hard Tag has an anti-body shadowing design that ensures full functionality, with 360° detection. Applied at source, it helps make supply chain data more precise. It can be used alone or in combination with either RF or AM- technology pins to meet your security needs—including "RFID as EAS."

KEY FEATURES:

- Anti-body shadowing design ensures full functionality
- 1 Alarm
- Use alone or in combination with RF- or AM technology pins; supports "RFID as EAS" for wide store door configurations
- Enhances accuracy and visibility throughout the supply chain (when applied at source)
- Works easily with magnetic detacher
- Difficult to defeat with common tools

SUGGESTED APPLICATIONS:

Apparel merchandise

SUGGESTED DETACHERS BY LOCKING MECHANISM:

Standard Lock (9414839, 10111227, 9238054). More info page 80 and 81 of the catalogue.

Super Lock (10144026, 10144027, 10104110, 10106181). More info page 81 and 82 of the catalogue.



SAP CODE	DESCRIPTION	EXTERNAL DIM. (L x W x D)	CARTON QTY.
10115313	G6 RFID Hard Tag with Pin	2.13" x 2.05" x 0.70" (54.1mm x 52.0mm x 17.9mm)	500
10115315	G6 RFID Hard Tag with RF Pin	2.13" x 2.05" x 0.70" (54.1mm x 52.0mm x 17.9mm)	500
10115314	G6 RFID Hard Tag with AM Pin	2.13" x 2.05" x 0.70" (54.1mm x 52.0mm x 17.9mm)	500
10115566	RF Pin - 9mm Shank		2000
10115569	AM Pin - 19mm Shank		2000

Gen7 Dual Technology HT

Checkpoint's Gen7 Dual Technology RF/RFID HT provides an anti-theft solution and technology for inventory control of high-risk items. The Gen7 HardTag incorporates both EAS and RFID technologies. The RFID read range performance is suitable for both inventory and "RFID as EAS" applications. Applied at source, it will help make supply chain data more precise. The Gen7 Hard Tag is quickly and easily removed at POS for re-use.

Quickly and easily removed at POS for re-use



Gen7 Dual Technology RF/RFID HT



Gen7 Dual Technology AM/RFID HT

KEY FEATURES:

- High performance and reliability for high-risk apparel tagging
- Supports "RFID as EAS" for wide store door configurations
- 1 Alarm
- Enhances accuracy and visibility throughout the supply chain (when applied @Source)
- Soft curves defining locking Surface to detach better
- Difficult to defeat with common tools; retains its effectiveness even after repeated use

SUGGESTED APPLICATIONS:

Apparel merchandise

Delicates

Intimates

Belts

SUGGESTED DETACHERS BY LOCKING MECHANISM:

Standard Lock (9414839, 10111227, 9238054). More info page 80 and 81 of the catalogue.

Super Lock (10144026, 10144027, 10104110, 10106181). More info page 81 and 82 of the catalogue.



Gen7 Pin



High performance and reliability for high-risk apparel tagging



Improves inventory control

SAP CODE	DESCRIPTION	EXTERNAL DIM. (L x W x H)	WEIGHT (g)	CARTON QTY.
9523818	Gen7 DT RF/RFID SPR HT + Pin, Grey	2.48" L x 1.22" W x 0.63" H (63mm x 31mm x 16mm)	11	500
10144589	Gen7 Dual Technology AM/RFID HT with pin, white	2.51" L x 1.24" W x 0.74" H (64mm x 31.60mm x 17.5mm)	11	500
10144947	Gen7 DT RF/RFID SPR HT + Pin, Black	2.48" L x 1.22" W x 0.63" H (63mm x 31mm x 16mm)	11	500
10146489	Pin 16mm For Gen7 Dark Grey	0.65" +/- 0.02" L x 0.05" D (16.5 +/- 0.5mm x 1.3mm)	0.6	500

Gen7 Mini RFID HT



Instruction video

Checkpoint Gen7 Hard Tag RFID provides an anti-theft solution and technology for inventory control of high-risk items.

The Gen7 HardTag RFID is thinner and lighter than the Gen7 and was exclusively developed for RFID applications. Applied at source, it will help make supply chain data more precise. The Gen7 Hard Tag is quickly and easily removed at POS for re-use.

KEY FEATURES:

- High performance and reliability for high-risk apparel tagging
- Supports RFID for wide store door configurations
- 1 Alarm
- Enhances accuracy and visibility throughout the supply chain (when applied @Source)
- Soft curves defining locking Surface to detach better
- Difficult to defeat with common tools; retains its effectiveness even after repeated use

SUGGESTED APPLICATIONS:

Apparel merchandise

Delicates

Intimates

SUGGESTED DETACHERS BY LOCKING MECHANISM:

Standard Lock (9414839, 10111227, 9238054). More info page 80 and 81 of the catalogue.

Super Lock (10144026, 10144027, 10104110, 10106181). More info page 81 and 82 of the catalogue.

Quickly and easily removed at POS for re-use



High performance and reliability for high-risk apparel tagging

*Gen7 Hard Tag RFID Pin*

Improves inventory control

SAP CODE	DESCRIPTION	EXTERNAL DIM. (L x W x H)	WEIGHT (g)	CARTON QTY.
9520831	Gen7 Mini RFID STD HT + Pin, Black	2.12" L x 1.24" W x 0.74" H (53.75mm x 31.60mm x 19mm)	8	250
9523011	Gen7 Mini RFID SPR HT + Pin, Black	2.12" L x 1.24" W x 0.74" H (53.75mm x 31.60mm x 19mm)	8	250

Optical Tag RFID



The Optical Tag RFID provides a durable construction whilst offering an adjustable, slim line design to improve the customer experience in-store. The Optical Tag RFID has been tailored to cover both optician and retailer needs.

KEY FEATURES:

- Easy to fit and remove with special detaching tool
- 1 Alarm
- Extended arm to apply adhesive labels
- 4 available technologies: AM, RF, RFID or Dual RF/AM + RFID
- Available for small (glasses) or big frames (sunglasses)

SUGGESTED APPLICATIONS:

Eyewear

Frames



Very resistant plastic material: safe and long product lasting

Easy to open and close thanks to special detaching tool

Two small rubber inserts inside the fastening ring protect the frame and assure the best adherence



SAP CODE	DESCRIPTION	EXTERNAL DIM. (L x W x D)	CARTON QTY.
9512311	Optical Tag LK11 RFID Small	2.52"L x 0.75"W x 0.55"D (6.4 cmL x 1.9 cmW x 1.4 cmD)	50
9512312	Optical Tag LK11 RFID Large	2.64"L x 1.02"W x 0.63"D (6.7 cmL x 2.6 cmW x 1.6 cmD)	50
9512313	Optical Tag LK11 RF + RFID Small	2.52"L x 0.75"W x 0.55"D	50
9512317	Optical Tag LK11 AM + RFID Small	(6.4 cmL x 1.9 cmW x 1.4 cmD)	50
9512314	Optical Tag LK11 RF + RFID Large	2.64"L x 1.02"W x 0.63"D	50
9512318	Optical Tag LK11 AM + RFID Large	(6.7 cmL x 2.6 cmW x 1.6 cmD)	50
9512319	Key Black Small	3.35"L (8.5cmL)	1
9512320	Key Coloured Large	4.29"L (10.9 cmL)	1

2 Alarm[®] CableLok[®] RFID

Specifically designed to help you lose less and sell more, CableLoks protect a wide range of high-theft hard and soft goods merchandise. CableLoks are reusable and completely portable, permitting open merchandising and free movement in the store which, in turn, minimizes sales assistance.

KEY FEATURES:

- 7x7 strand aircraft grade coaxial cable
- 95 dBA alarm
- 2 alarm
- Flashing LED light
- Isolated sound chamber
- Easy to apply and remove
- Tough, secure and reusable
- Battery powered RFID chip provides a stronger transmission and helps prevent body shadowing

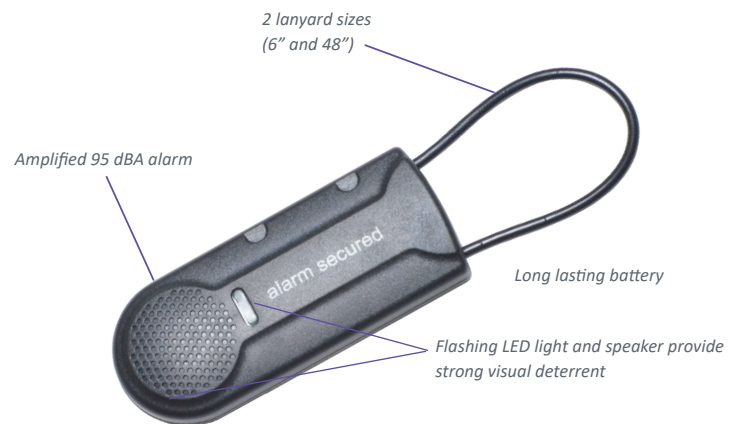
SUGGESTED APPLICATIONS:

6" CableLok: Luxury handbags, backpacks, luggage, camera bags, briefcases, sports equipment, power tools, grills

48" CableLok: Coats, furs, dresses, men's and women's suits

SUGGESTED DETACHERS BY LOCKING MECHANISM:

S3 Lock: S3 Handkeys (10006401, 10006402, 10006398, 10006399, 10006347, 9286317, 10006400, 9409394). More info page 79 of the catalogue.



Can protect every type of coats thanks to the 48" version



ORDER CODE	SAP CODE	DESCRIPTION	EXTERNAL DIM. (H x W x D)	CARTON QTY.
CL1380RFID2ALRF6	10115391	2 Alarm CableLok RFID - 6" Lanyard (15.24 cm)	Housing - 3.53"L x 1.62"W x 0.74"D (8.97 cmL x 4.11 cmW x 1.88 cmD)	25
CL1380RFID2ALRF45	10115392	2 Alarm CableLok RFID - 48" Lanyard (121.92 cm)	Housing - 3.53"L x 1.62"W x 0.74"D (8.97 cmL x 4.11 cmW x 1.88 cmD)	25

2 Alarm Mini Spider Wrap®

The Mini Spider's unique size maximizes display opportunities for small packaged goods. The strong internal clutch mechanism enables the cables to be cinched tightly, providing increased security for your smaller boxed merchandise.

KEY FEATURES:

- Reusable, one-piece design
- Aircraft grade cable
- 95 dBA alarm
- 2 alarm
- Easy to apply and remove
- S3vx version provides added security with verification code
- Available with RFID inlay to provide a stronger transmission and help prevent body shadowing

SUGGESTED APPLICATIONS:

Housewares
Coffee makers
Portable DVD players
iPods
Digital photo frames
Mobile phones
Video game hardware
Software
Zip drives
Video games
Ink and toner cartridges



S3vx 2 Alarm Mini Spider Wrap

Includes Lithium battery for years of hassle-free operation



SUGGESTED DETACHERS BY LOCKING MECHANISM:

S3 Lock: S3 Handkeys (10006401, 10006402, 10006398, 10006399, 10006347, 9286317, 10006400, 9409394). More info page 79 of the catalogue.

ORDER CODE	SAP CODE	DESCRIPTION	CARTON QTY.
2ALMNSWRPLRFID	10141256	2 Alarm Mini Spider Wrap - 32" RFID (81.28 cm)	25

2 Alarm Attack Spider Wrap®

Alpha, the first to bring the concept of a security wrap to market, continues to enhance the Spider Wrap® with features that provide greater ease of use and improved security. A new, strong internal clutch enables cables to be cinched tightly around merchandise providing increased security for your boxed merchandise.

KEY FEATURES:

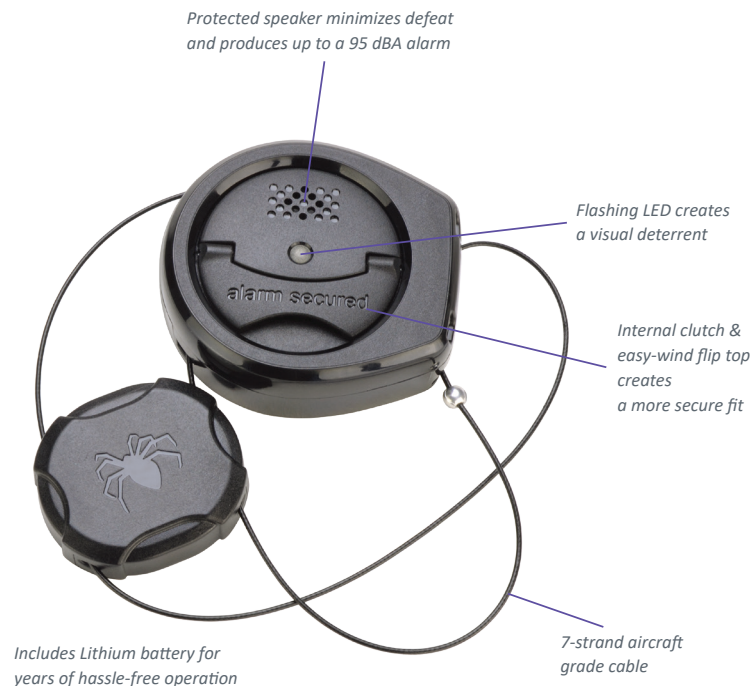
- Reusable, one-piece design
- 70" or 102" 7-strand aircraft grade cable
- 95 dBA alarm
- 2 alarm
- Flashing LED creates a visual deterrent
- Includes Lithium battery for years of hassle-free operation
- Easy to apply and remove
- S3vx version provides added security with verification code
- Available with RFID inlay to provide a stronger transmission and help prevent body shadowing

SUGGESTED APPLICATIONS:

Medium to large packaged goods

SUGGESTED DETACHERS BY LOCKING MECHANISM:

S3 Lock: S3 Handkeys (10006401, 10006402, 10006398, 10006399, 10006347, 9286317, 10006400, 9409394). More info page 79 of the catalogue.



Auto-lock feature reduces number of steps required to apply

ORDER CODE	SAP CODE	DESCRIPTION	CARTON QTY.
SP1310S3RFID70	10140806	2 Alarm Attack Spider Wrap - 70" RFID (177.80 cm)	25
SP1310S3RFID102	10140807	2 Alarm Attack Spider Wrap - 102" RFID (259.08 cm)	25

Crystal Guard RF/RFID

The clear design of the Crystal Guard RF/RFID provides attractive benefit denial security for your merchandise. Two sizes offer a wide range of coverage for a highly secure, perfect fit.

KEY FEATURES:

- Cap offers a strong visual deterrent and benefit denial protection
- Pain points under the base deter improper prying
- Clear top provides a clean product display and easy viewing of product labels
- 1 Alarm
- Dual Technology RF/RFID
- Comes in small and large sizes
- Intuitive slider for locking and unlocking
- "Alarm" print offers visual deterrent

SUGGESTED APPLICATIONS:

Wine bottles

Spirits

SUGGESTED DETACHERS BY LOCKING MECHANISM:

S3 Lock: S3 Handkeys (10006401, 10006402, 10006398, 10006399, 10006347, 9286317, 10006400, 9409394). More info page 79 of the catalogue.



SAP CODE	DESCRIPTION	CARTON QTY.
10139580	Crystal Guard Large RF/RFID V3 CE	50
10139591	Crystal Guard Small RF/RFID V3 CE	50

Miscellaneous

Shopping Security Bag



The Shopping Security Bag is a personalised bag closed by a banded hard tag. It enables 2 main applications: security bag or shopping bag.

This solution can be used as a security bag at the entrance of the store to fit personal belongings (shopping bags from other stores, etc.) and as a shopping bag to fit products from the store where no shopping baskets are available. The Shopping Security Bag is available in 2 different format (vertical and horizontal).

KEY FEATURES:

- Personalised security bag
- Personalised shopping bag
- Improves brand awareness
- Versatility
- Standard Locking system

SUGGESTED APPLICATIONS:

Security Bag

Shopping Bag

SUGGESTED DETACHERS BY LOCKING MECHANISM:

Standard Lock (9414839, 10111227, 9238054). More info page 80 and 81 of the catalogue.



Improved brand awareness at entrance and POS



SAP CODE	DESCRIPTION	EXTERNAL DIM. (W x H x D)	CARTON QTY.
9532342	CKP Shopping Sec Bag Hor RF STD	580 mmW x 420 mmH x150 mmD	50
9532343	CKP Shopping Sec Bag Ver RF STD	450 mmW x 550 mmH x150 mmD	50
9532344	CKP Shopping Sec Bag Hor AM STD	580 mmW x 420 mmH x150 mmD	50
9532345	CKP Shopping Sec Bag Ver AM STD	450 mmW x 550 mmH x150 mmD	50

Index

Bottle caps (Page 5)



CableLoks (Page 13)



Hard Tags Blister/Open Display (Page 20)



Hard Tags Apparel (Page 43)



Keepers (Page 60)



Keys (Page 78)



Single Use (Page 84)



Spider Wraps (Page 87)



S3vx (Page 96)



RFID (Page 101)



Miscellaneous (Page 114)

CONNECTION
ANALYSIS
DATA
SEARCHING
VERIFICATION
CODING
SENDING

Checkpoint® 

Europe
Checkpoint Systems España
Orió nº 1 - 08228 Terrassa
Barcelona, Spain
+34 937 365 473

www.checkpointsystems.com

CONNECTION
ANALYSIS
DATA
SEARCHING
VERIFICATION
CODING
SENDING